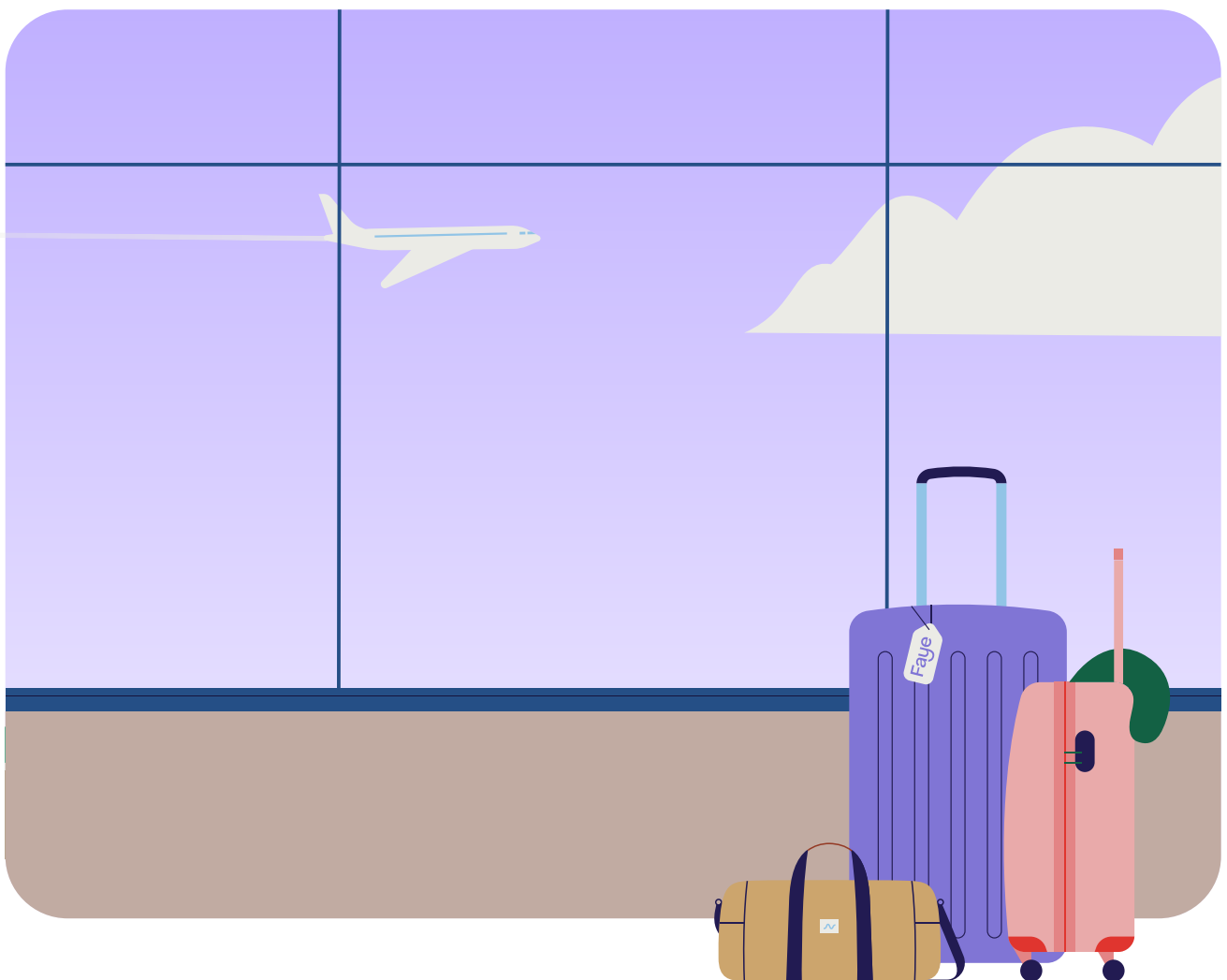


Faye

All the details

Faye travel protection domestic plan

Travel protection that goes the distance to provide coverage and care at every step of your journey.



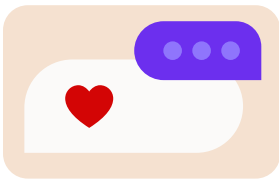
www.withfaye.com

Faye

We want to hear from you

Contact us 24/7 (yes, real humans!)

For emergencies, or anything else you'd like to talk about.



Chat

Chat with us via the Faye app on [iOS](#) or [Android](#)



Phone

Toll-free from the U.S. [+1-833-240-7056](tel:+1-833-240-7056)
From outside of the U.S. [+1-804-482-2122](tel:+1-804-482-2122)



Email

Shoot us a note at support@withfaye.com

www.withfaye.com

Plan Summary

Faye Travel Protection Domestic

Base Plan

Benefit(s)	Maximum Benefit amount
Trip Delay	up to \$300 per day, to a maximum of \$2,100
Travel Inconvenience	up to a maximum of \$600
Baggage Delay	\$200
Delay at Security Check-in	\$200
Flight Delay	\$200
Flight Cancellation	\$200
Flight Diversion	\$200
Rental Property Lockout	\$200
Hotel Late Arrival	\$200
Travel Delay	
Internet Usage Fee	up to \$50
Airline Club Admission Fee	up to \$25
Baggage and Personal Effects	up to \$750
Passport, Visa or Other Travel Documents Replacement	up to \$50
Credit Card charges and interest	up to \$50
Per Article Limit	up to \$150
Combined articles limit	up to \$200
Baggage Delay	up to \$300

Optional Bundles

We only cover You for the Optional Upgrade Benefit(s) that You elect during the enrollment process, provided You paid the required additional premium and Zenner, Inc. received Your premium. These Optional Bundles are in addition to the Base Plan.

Trip Cancellation/Trip Interruption Bundle

If you purchase the Trip Cancellation/Trip Interruption Bundle within 14 days of the date Your initial Payment or Deposit for Your Trip is received, Pre-Existing Conditions will be waived, provided you meet all eligibility requirements. Please see the below Plan Document for specific details and eligibility requirement

Benefit(s)	Maximum Benefit amount
Optional Trip Cancellation	up to 100% of the non-refundable insured Trip Cost
Optional Trip Interruption	up to 150% of the non-refundable insured Trip Cost
Optional Single Supplement	Included

Trip Interruption Bundle

If you purchase the Trip Interruption Bundle within 14 days of the date Your initial Payment or Deposit for Your Trip is received, Pre-Existing Conditions will be waived, provided you meet all eligibility requirements. Please see the below Plan Document for specific details and eligibility requirements.

Benefit(s)	Maximum Benefit amount
Optional Trip Interruption	up to 150% of the non-refundable insured Trip Cost

Cancel For Any Reason Bundle

The Cancel For Any Reason Bundle is only available if the Trip Cancellation/Trip Interruption Bundle is also purchased.

Benefit(s)	Maximum Benefit amount
Optional Cancel for Any Reason	up to 75% of the non-refundable insured Trip Cost

Trip Delay Upgrade Bundle

If purchased, the Trip Delay Maximum Benefit Amount will increase to a total of \$4,500.

Benefit(s)	Maximum Benefit amount
Trip Delay	Up to \$300 per day, to a maximum of \$2,400
Optional Missed Trip Connection	up to \$200

Pet Parent Bundle

Benefit(s)	Maximum Benefit amount
Optional Pet or Service Animal Return	up to \$250
Optional Pet Kennel	up to \$250
Optional Pet or Service Animal Travel Medical Expense	up to \$2,500
Optional Quarantine Kenneling Expense	up to \$2,500

Rental Car Bundle

Benefit(s)	Maximum Benefit amount
Optional Rental Car Damage And Theft Coverage	up to \$50,000
Optional Travel Inconvenience	\$200 per each inconvenience up to a maximum of \$600
Closed Attractions	
Beach Closure	
Rainy Vacation	
Rental Vehicle Breakdown	
Credit/Debit Card Cancelled	
Vacation Rental	

Rental Property Damage Liability

Benefit(s)	Maximum Benefit amount
Optional Rental Property Damage Liability	up to \$3,000

Baggage Upgrade Bundle

If purchased, the Baggage and Personal Effects Maximum Benefit Amount will increase to a total of \$2,000.

Benefit(s)	Maximum Benefit amount
Baggage and Personal Effects	up to \$1,250
Optional Sports Equipment	Included
Optional Golf Equipment	Included
Optional Business Equipment	Included

Medical Bundles

Only one Medical Bundle can be selected per plan.

Medical Bundle 1A

Benefit(s)	Maximum Benefit amount
Optional Medical Evacuation and Repatriation of Remains Benefit	up to \$500,000
Return Transportation	Included
Transportation of Children/Child	Included
Transportation to Join You	Included
Optional Accident & Sickness Medical Expense	up to \$50,000
Dental Expense Sublimit	up to \$750

Medical Bundle 1B

Benefit(s)	Maximum Benefit amount
Optional Medical Evacuation and Repatriation of Remains Benefit	up to \$500,000
Return Transportation	Included
Transportation of Children/Child	Included
Transportation to Join You	Included
Optional Accident & Sickness Medical Expense	up to \$250,000
Dental Expense Sublimit	up to \$750

Medical Bundle 1C

Medical Bundle 1C includes coverage for Adventure or Extreme Activities.

Benefit(s)	Maximum Benefit amount
Optional Medical Evacuation and Repatriation of Remains Benefit	up to \$500,000
Return Transportation	Included
Transportation of Children/Child	Included
Transportation to Join You	Included
Optional Accident & Sickness Medical Expense	up to \$50,000
Dental Expense Sublimit	up to \$750

Medical Bundle 1D

Medical Bundle 1D includes coverage for Adventure or Extreme Activities.

Benefit(s)	Maximum Benefit amount
Optional Medical Evacuation and Repatriation of Remains Benefit	up to \$500,000
Return Transportation	Included
Transportation of Children/Child	Included
Transportation to Join You	Included
Optional Accident & Sickness Medical Expense	up to \$250,000
Dental Expense Sublimit	up to \$750

Important: This plan summary provides only a summary of the Plan Benefits. Please see the below Plan Document for your complete plan details.

Active Care Management Worldwide Non-Insurance Assistance Services

The Travel Assistance feature provides a variety of travel related services. Services offered include:

Medical or Legal Referral • Inoculation Information • Hospital Admission Guarantee • Telemedicine • House Calls • Translation Service • Lost Baggage Retrieval • Passport/Visa Information • Emergency Cash Advance • Bail Bond • Prescription Drug/Eyeglass Replacement • ID Theft Resolution Service • Concierge Service • Business Concierge

24/7 Worldwide Non-Insurance Assistance Services
Travel Assistance, Medical Emergency, Concierge Service, Business Concierge, and ID Theft Resolution Service

FOR EMERGENCY ASSISTANCE DURING YOUR TRIP CALL:

855-317-1191

(From US/Canada)

OR CALL COLLECT:

519-251-7822

(From all other locations)

Travel assistance non-insurance services are provided by an independent organization and not by United States Fire Insurance Company or Travel Insured International. There may be times when circumstances beyond the Assistance Company's control hinder their endeavors to provide travel assistance services. They will, however, make all reasonable efforts to provide travel assistance services and help You resolve Your emergency situation.

Availability Of Services

You are eligible for information and concierge services at any time after You purchase this plan.

The Emergency Assistance Services become available when You actually start Your Covered Trip.

Emergency Assistance, Concierge and Informational Services end the earliest of: midnight on the day the program expires; when You reach Your return destination; or when You complete Your Covered Trip. The Identity Theft Resolution Services become available on Your scheduled departure date for Your Covered Trip. Services are provided only for an Identity Theft event which occurs while on Your Covered Trip. Identity Theft Resolution does not guarantee that its intervention on behalf of You will result in a particular outcome or that its efforts on behalf of You will lead to a result satisfactory to You. Identity Theft Resolution does not include and shall not assist You for thefts involving non-US bank accounts.

Identity Theft Resolution Services

In the event of an Identity Theft event while on Your Covered Trip, Travel Insured's designated provider will provide you with the support and tools needed for You to restore Your identity.

Assistance includes contacting Your creditors to notify them of the event and to request replacement cards; connecting you with a friend or family member at home and providing them with the assistance to set up a transfer or wire of funds; information on how to contact the three major credit bureaus; guidance on how to obtain a police report; and providing You with a guide on how to restore Your credit.

Concierge Services

Concierge Services are provided by Travel Insured's designated provider. There is no charge for the services provided by the provider. You are responsible for the cost of services provided and charged for by third parties and for the actual cost of merchandise, entertainment, sports, tickets, food and beverages and other disbursement items.

Services offered include: • Destination Profiles

• Epicurean Needs • Event Ticketing • Floral Services • Tee Time Reservations • Hotel Accommodations • Meet-And-Greet Services • Shopping Assistance Services • Pre-Trip Assistance • Procurement of Hard-To-Find Items • Restaurant Referrals and Reservations • Rental Car Reservations • Airline Reservations

Business Concierge Services

Concierge Services are provided by Travel Insured's designated provider. There is no charge for the services provided by the provider. You are responsible for the cost of services provided and charged for by third parties.

Services offered include:

Emergency Correspondence And Business Communication Assistance • Assistance With Locating Available Business Services Such As: Express/Overnight Delivery Sites, Internet Cafes, Print/Copy Services • Assistance With Or Arrangements For Telephone And Web Conferencing • Emergency Messaging To Customers, Associates, And Others (Phone, Fax, E-mail, Text, etc.) • Real Time Weather, Travel Delay And Flight Status Information • Worldwide Business Directory Service For Equipment Repair/Replacement, Warranty Service, etc. • Emergency Travel Arrangements

INDIVIDUAL TRAVEL INSURANCE POLICY

Faye Travel Protection Domestic

United States Fire Insurance Company, herein referred to as the "Company" or as "We", "Us" and "Our", agrees to pay the benefits provided by this policy per its provisions. This policy provides travel protection insurance benefits. Defined terms are capitalized and their meanings are listed in the General Definitions section.

PLEASE READ THIS DOCUMENT CAREFULLY FOR FULL DETAILS

This document is a legal contract issued in consideration of Your enrollment and payment of the premium due collected by Us or Our authorized representative.

14 Day Free Look Period


If You are not satisfied for any reason, You may cancel this policy within 14 days of the Effective Date of Your coverage by providing Us or Our authorized representative the cancellation notice. We will refund Your premium provided there has been no incurred loss; You have not departed on Your Trip or filed a claim under this policy. When so returned, all coverages under this policy are invalid from the beginning.

INCORPORATION PROVISION: The provisions of this policy and all amendments to this policy, after its effective date, are made part of this policy.

Signed for United States Fire Insurance Company By:



Marc J. Ade
Chairman and CEO



Michael P. McTigue
Secretary

Table Of Contents

Schedule Of Benefits

Section I	Coverage Provisions
Section II	When Coverage Begins And Ends
Section III	Extension Of Coverage
Section IV	Travel Arrangement Protection
Section V	Protection For Your Belongings
Section VI	Travel Insurance Benefits
Section VII	Accidental Death And Dismemberment Benefits
Section VIII	General Definitions
Section IX	Exclusions And Limitations
Section X	Premiums
Section XI	Claims Procedures
Section XII	How To File A Claim
Section XIII	General Provisions

Schedule Of Benefits

Section IV	
Travel Arrangement Protection	Maximum Benefit amount
Trip Delay 6 hours	up to \$300 per day, to a maximum of \$2,100
Travel Inconvenience	up to a maximum of \$600
Baggage Delay	\$200
Delay at Security Check-in	\$200
Flight Delay	\$200
Flight Cancellation	\$200
Flight Diversion	\$200
Rental Property Lockout	\$200
Hotel Late Arrival	\$200
Travel Delay	
Internet Usage Fee	up to \$50
Airline Club Admission Fee	up to \$25
Section V	
Protection For Your Belongings Benefit(s)	Maximum Benefit amount
Baggage and Personal Effects	up to \$750
Sub-limits	
Passport, Visa or Other Travel Documents Replacement	up to \$50
Credit Card charges and interest	up to \$50
Per Article Limit	up to \$150
Combined articles limit	up to \$200
Baggage Delay 12 hours	up to \$300

T7000IP-SOB

Section IV		
Travel Arrangement Protection		Maximum Benefit amount
Optional Trip Cancellation Trip Interruption Bundle	Optional Trip Cancellation	up to 100% of the non-refundable insured Trip Cost*
	Optional Trip Interruption	up to 150% of the non-refundable insured Trip Cost*
	Optional Single Supplement	Included
	*Up to the lesser of the Trip Cost paid or the limit of coverage on Your confirmation of coverage	

T7000IP-SOB

Section IV		
Travel Arrangement Protection		Maximum Benefit amount
Optional Trip Interruption Bundle	Optional Trip Interruption	up to 150% of the non-refundable insured Trip Cost*
	*Up to the lesser of the Trip Cost paid or the limit of coverage on Your confirmation of coverage	

T7000IP-SOB

Section IV		
Travel Arrangement Protection		Maximum Benefit amount
Optional Cancel For Any Reason Bundle	Optional Cancel For Any Reason	up to 75% of the non-refundable insured Trip Cost*
	*Up to the lesser of the Trip Cost paid or the limit of coverage on Your confirmation of coverage	

T7000IP-SOB

Section IV		
Travel Arrangement Protection		Maximum Benefit amount
Optional Trip Delay Upgrade Bundle	Trip Delay	up to \$300 per day, to a maximum of \$2,400
	Optional Missed Connection	up to \$200

T7000IP-SOB

Section IV		
Travel Arrangement Protection		Maximum Benefit amount
Optional Pet Parent Bundle	Optional Pet or Service Animal Return	up to \$250
	Optional Pet Kennel	up to \$250
	Optional Pet or Service Animal Travel Medical Expense	up to \$2,500
	Optional Quarantine Kenneling Expense	up to \$2,500

T7000IP-SOB

Section IV		
Travel Arrangement Protection		Maximum Benefit amount
Optional Rental Car Bundle	Optional Rental Car Damage And Theft Coverage	up to \$50,000
	Optional Travel Inconvenience	\$200 per each inconvenience up to a maximum of \$600
	Closed Attractions	
	Beach Closure	
	Rainy Vacation	
	Rental Vehicle	
	Breakdown	
	Credit/Debit Card Cancelled	
	Vacation Rental	

T7000IP-SOB

Section IV		
Travel Arrangement Protection		Maximum Benefit amount
Optional Rental Property Damage Liability		up to \$3,000

T7000IP-SOB

Optional Medical Bundle 1A	Section IV	
	Travel Arrangement Protection	Maximum Benefit amount
	Optional Medical Evacuation and Repatriation of Remains Benefit	up to \$500,000
	Emergency Medical Evacuation	Included
	Medical Repatriation	Included
	Repatriation of Remains	Included
	Hospital of Choice	Included
	Medical Escort	Included
	Return Transportation	Included
	Transportation of Children/Child	Included
	Transportation to Join You	Included
	Section VI	
	Travel Insurance Benefit(s)	Maximum Benefit amount
	Optional Accident & Sickness Medical Expense	up to \$50,000
	Dental Expense submit	up to \$750

T7000IP-SOB

Optional Medical Bundle 1B	Section IV	
	Travel Arrangement Protection	Maximum Benefit amount
	Optional Medical Evacuation and Repatriation of Remains Benefit	up to \$500,000
	Emergency Medical Evacuation	Included
	Medical Repatriation	Included
	Repatriation of Remains	Included
	Hospital of Choice	Included
	Medical Escort	Included
	Return Transportation	Included
	Transportation of Children/Child	Included
	Transportation to Join You	Included
	Section VI	
	Travel Insurance Benefit(s)	Maximum Benefit amount
	Optional Accident & Sickness Medical Expense	up to \$250,000
	Dental Expense submit	up to \$750

T7000IP-SOB

Section IV		
Travel Arrangement Protection		Maximum Benefit amount
Optional Medical Bundle 1C	Optional Medical Evacuation and Repatriation of Remains Benefit	up to \$500,000
	Emergency Medical Evacuation	Included
	Medical Repatriation	Included
	Repatriation of Remains	Included
	Hospital of Choice	Included
	Medical Escort	Included
	Return Transportation	Included
	Transportation of Children/Child	Included
	Transportation to Join You	Included
	Section VI	
Travel Insurance Benefit(s)		Maximum Benefit amount
Optional Accident & Sickness Medical Expense	up to \$50,000	
Dental Expense submit	up to \$750	

T7000IP-SOB

Section IV		
Travel Arrangement Protection		Maximum Benefit amount
Optional Medical Bundle 1D	Optional Medical Evacuation and Repatriation of Remains Benefit	up to \$500,000
	Emergency Medical Evacuation	Included
	Medical Repatriation	Included
	Repatriation of Remains	Included
	Hospital of Choice	Included
	Medical Escort	Included
	Return Transportation	Included
	Transportation of Children/Child	Included
	Transportation to Join You	Included
	Section VI	
Travel Insurance Benefit(s)		Maximum Benefit amount
Optional Accident & Sickness Medical Expense	up to \$250,000	
Dental Expense submit	up to \$750	

T7000IP-SOB

Section V		
Protection For Your Belongings Benefit(s)		Maximum Benefit amount
Optional Baggage Upgrade Bundle	Baggage and Personal Effects	up to \$1,250
	Optional Sports Equipment	Included
	Optional Golf Equipment	Included
	Optional Business Equipment	Included

T7000IP-SOB

Optional Upgrade Benefit(s)

We only cover You for the Optional Upgrade Benefit(s) that You elect during the enrollment process, provided You paid the required additional premium and Zenner, Inc. received Your premium.

Section I Coverage Provisions

Who Is Eligible For Coverage

A person who is booked to travel on a Trip and pays the required premium is covered under this policy. Eligibility for purchase of this policy will be determined at the time of claim. If it is determined that a person or Trip is not eligible for coverage, any claim for benefits will be denied and Your premium for this policy will be refunded. Coverage is only available for persons who are a citizen or resident of the United States of America.

Section II When Coverage Begins And Ends

When Coverage Begins:

This is Your Effective Date and time for Optional Trip Cancellation; Optional Cancellation For Any Reason:

Coverage begins at 12:01 a.m. at Your location on the day after the date We or Our authorized representative receive the required premium to cover Your Trip.

This is Your Effective Date and time for Optional Rental Car Damage And Theft Coverage:

Coverage begins when You sign the Rental Car Agreement and take legal possession of the Rental Car provided You pay the required premium.

This is Your Effective Date and time for Optional Rental Property Damage Liability Benefit:

Coverage begins on the date and time You check-in as a registered guest at the Rental Property, and You pay the required policy cost before check in.

This is Your Effective Date and time for Trip Delay:

Coverage is in force while en route to and from the Covered Trip.

This is Your Effective Date and time for All Other Coverages:

Coverage begins: on the date and time You depart on the first Travel Arrangement (or alternate travel arrangement if You must use an alternate Travel Arrangement to reach Your Scheduled Destination) for Your Trip.

When Coverage Ends:

Optional Trip Cancellation; Optional Cancel For Any Reason:

coverage(s) automatically end on the earlier of:

1. the date and time You depart on Your Trip;
2. the date and time You cancel Your Trip.

Optional Rental Car Damage And Theft Coverage:

Coverage ends when the car is returned to the rental car company on or before the return date and time listed on the Rental Car Agreement, at Your location on the return date and time listed on the Rental Car Agreement if the car is not returned as specified on the Rental Car Agreement and the rental period has not been extended by You.

Optional Rental Property Damage Liability Benefit coverage ends on the earlier of:

- (1) the normal check-out time on Your scheduled check-out date from the Rental Property; or
- (2) the time You check-out from the Rental Property, if the check-out occurs prior to the scheduled check-out date.

All Other Coverages: Your coverage automatically ends on the earlier/est of:

1. the date You complete Your Trip;
2. the Scheduled Return Date;
3. Your arrival at Your Return Destination on a round Trip, or Your Scheduled Destination on a one-way Trip;
4. cancellation of Your Trip covered by this policy.

Section III Extension Of Coverage

Automatic Extension of Coverage

All coverages will be extended if Your entire Trip is covered by this policy and Your return is delayed due to unavoidable circumstances beyond Your control. This extension of coverage will end on the earlier of the date You reach Your originally scheduled Return Destination or 7 days after the originally Scheduled Return Date.

Optional Medical Evacuation and Repatriation Extension

If You incur a covered Injury or Sickness on Your Trip and a treating Physician certifies that You are not Medically Fit to Travel to Your Return Destination on Your Scheduled Return Date, the Medical Evacuation and Repatriation benefit will be automatically extended until You are Medically Fit to Travel and transported to Your Primary Residence or

You reached the Maximum Benefit Amount shown in the Schedule of Benefits.

Optional Accident and Sickness Medical Expense Extension

If You are Hospitalized due to a covered Injury or Sickness on Your Trip and a treating Physician certifies that You are not Medically Fit to Travel to Your Return Destination on Your Scheduled Return Date, this benefit will be extended for an additional 14 days, or until You are released from the Hospital and Medically Fit to Travel, or You reached the Maximum Benefit Amount shown in the Schedule of Benefits, whichever is earlier, provided that Hospitalization goes beyond the date Your Coverage Ends.

Section IV Travel Arrangement Protection

Optional Trip Cancellation

If You cancel Your Trip prior to the Scheduled Departure Date, We will reimburse You, up to the Maximum Benefit Amount shown in the Schedule of Benefits, for unused, forfeited, prepaid non-refundable Payments or Deposits for the Travel Arrangements You purchased for Your Trip, provided the cancellation occurs while coverage is in effect for You and is due to any of the following covered Unforeseen reasons, as defined:

1. Your, a Family Member's, a Traveling Companion's, Traveling Companion's Family Member's or Business Partner's, death that occurs before departure on Your Trip; or
2. Your, a Family Member's, a Traveling Companion's, Traveling Companion's Family Member's or Business Partner's, Sickness or Injury, that:
 - a. occurs before departure on Your Trip;
 - b. is examined and treated by a Physician prior to cancellation unless it is not reasonably possible to do so; and
 - c. as certified by a Physician, results in medical restrictions so disabling as to cause You to cancel Your Trip.

Sickness or Injury of Your Business Partner must be so disabling as to reasonably cause You to cancel Your Trip to assume daily management of the business;

3. You or Your Traveling Companion must cancel Your Trip due to Other Covered Events as defined, provided such circumstances occur while coverage is in effect:

Other Covered Events means:

1. You or Your Traveling Companion have Complications of Pregnancy, which is verified by medical records and occurs after the Effective Date of coverage;
2. The Financial Insolvency or Financial Default of an entity that directly provides Travel Arrangements, including an Air Common Carrier, cruise line, tour operator, or other travel entity that causes a complete cessation of travel services if the Financial Insolvency or Financial Default occurs more than 14 days following Your Effective Date for Your Trip Cancellation benefit. Benefits will be paid due to Financial Insolvency or Financial Default of an airline only if no alternate transportation is available. If alternate transportation is available, benefits will be limited to the change fee charged to allow You to transfer to another airline in order to get to Your intended destination;
3. You or Your Traveling Companion are directly involved in a traffic accident, while en route to Your Scheduled Trip Departure City. The traffic accident must be documented by a police report;
4. mandated shutdown by local government authorities of an airport or air traffic control system resulting in the complete cessation of services other than terrorism or act of war for at least 6 consecutive hours of Your Air Common Carrier;
5. Due to a Natural Disaster, a mandatory evacuation is ordered by local government authorities at Your Scheduled Destination which prevents You from traveling to/arriving at Your Scheduled Destination;
6. Your or Your Traveling Companion's Primary Residence or Scheduled Destination is made Uninhabitable and remains Uninhabitable during Your Trip by a Natural Disaster or burglary;

Claims are not payable if a hurricane is foreseeable prior Your Effective Date for Trip Cancellation. A hurricane is foreseeable on the date it becomes a named storm;
7. You or Your Traveling Companion are hijacked or Quarantined;
8. You or Your Traveling Companion are subpoenaed, served with a court order, required to serve on a jury, or required to appear as a witness in a legal action, provided You or Your Traveling Companion are not: 1) a party to the legal action; except 2) appearing in a law enforcement capacity;
9. You or Your Traveling Companion or Family Member are called to active military duty either to serve or to provide aid or relief in the event of a Natural Disaster;

10. Your or Your Traveling Companion's previously granted military leave is revoked or reassigned. Official written revocation/re-assignment by a supervisor or commanding officer of the appropriate branch of service will be required. The military leave for the dates of travel must have been approved prior to the Effective Date of Trip Cancellation coverage and the leave revoked or reassigned after the Effective Date of Trip Cancellation coverage;
11. Your Host at Your Scheduled Destination being unable to provide Accommodations due to a life-threatening Sickness or Injury, or due to his/her death;
12. a Terrorist Incident occurs before Your Trip within 30 days of Your Scheduled Departure Date in a city listed on the scheduled itinerary of Your Trip;

Provided Your Travel Supplier (if applicable) did not offer a substitute itinerary;
13. a documented theft of Your passports or visas specifically required for Your Trip. A police report must substantiate the theft;
14. You or Your Traveling Companion are the victim of a Felonious Assault within 10 days prior to the Scheduled Departure Date;
15. a travel alert or travel warning for levels 4 and higher is issued for cities listed on Your itinerary after Your Effective Date for Trip Cancellation to a destination specifically listed on Your Itinerary. The travel alert/warning, etc. must occur within 30 days of the scheduled Departure Date;
16. You or Your Traveling Companion are involuntarily terminated or laid off from Your or their employment. The termination notice must occur at least 1 days after Your Trip Cancellation Effective Date. You or Your Traveling Companion must have been an active employee with the same employer for at least 1 continuous year. This provision is not applicable to temporary or seasonal employment, independent contractors, freelancer or self-employed persons.

The maximum payable under this Trip Cancellation Benefit is the lesser of the total amount of coverage You purchased or the Maximum Benefit Amount shown in the confirmation of coverage.

You must report all cancellations to the Travel Supplier within 72 hours of the event causing the need to cancel. If the event delays the reporting of the cancellation beyond the 72 hours, You should report the event as soon as possible. We do not cover increased amounts of unused, non-refundable prepaid Payments or Deposits that result from all other delays or reporting beyond 72 hours.

These benefit(s) will not duplicate any other benefits payable under the policy or any coverage(s) attached to

the policy.

Optional Trip Interruption

If You must start Your Trip late or are unable to complete Your Trip, We will reimburse You, up to the Maximum Benefit Amount shown in the Schedule of Benefits, for the unused, forfeited, prepaid non-refundable Payments or Deposits paid for the land or water Travel Arrangements You purchased for Your Trip plus the Additional Transportation Cost paid to:

- a) join Your Trip if You must depart after Your Scheduled Departure Date or travel via alternate travel arrangements;
- b) rejoin Your Trip from the point where You interrupted Your Trip to the next Scheduled Destination; or
- c) transport You to Your originally scheduled Return Destination of Your Trip;

The benefit payable for the above will not exceed the cost of a one-way economy airfare (or first or business class, if the original tickets were first or business class) by the most direct route less any refunds paid or payable for Your unused original tickets.

Trip Interruption must occur while coverage is in effect for You due to any of the following covered Unforeseen reasons, as defined:

1. Your, a Family Member's, a Traveling Companion's, a Traveling Companion's Family Member's or a Business Partner's death, which occurs while You are on Your Trip; or
2. Your, a Family Member's, a Traveling Companion's, a Traveling Companion's Family Member's or a Business Partner's Sickness or Injury, that:
 - a) occurs while You are on Your Trip;
 - b) is examined and treated by a Physician prior to the time of interruption unless it is not reasonably possible to do so; and
 - c) as certified by a Physician, results in medical restrictions so disabling as to prevent Your continued participation on Your Trip;
3. You or Your Traveling Companion must interrupt Your Trip due to Other Covered Events as defined, provided such circumstances occur while coverage is in effect:

Other Covered Events means:

1. You or Your Traveling Companion have Complications of Pregnancy which is verified by medical records and occurs while You or Your Traveling Companion are on Your Trip;

2. a local government mandated shutdown of an airport or air traffic control system resulting in the complete cessation of services other than terrorism or act of war for at least 6 consecutive hours of Your Air Common Carrier;
3. mandatory evacuation ordered by local government authorities at Your Scheduled Destination due to a Natural Disaster which prevents You from traveling to/ arriving at Your Scheduled Destination;
4. You or Your Traveling Companion are directly involved in a traffic accident, while en route to Your Scheduled Trip Departure City. The traffic accident must be documented by a police report;
5. Your or Your Traveling Companion's Primary Residence or Scheduled Destination are made Uninhabitable and remains Uninhabitable during Your Trip by a Natural Disaster or burglary;

Claims are not payable if a hurricane is foreseeable prior Your Effective Date for Trip Interruption. A hurricane is foreseeable on the date it becomes a named storm;

6. You or You Traveling Companion are hijacked or Quarantined;
7. You or Your Traveling Companion are subpoenaed, served with a court order, required to serve on a jury, or required to appear as a witness in a legal action, provided You or Your Traveling Companion are not: 1) a party to the legal action; except 2) appearing in a law enforcement capacity;
8. You or Your Traveling Companion or Family Member are called to active military duty either to serve or to provide aid or relief in the event of a Natural Disaster;
9. Your or Your Traveling Companion's previously granted military leave is revoked or reassigned while You or Your Traveling Companion are on the Trip and You or Your Traveling Companion have to interrupt the Trip. Official written notice of the revocation or re-assignment by a supervisor or commanding officer of the appropriate branch of service will be required. The military leave for the dates of travel must have been approved prior to the Effective Date of Trip Interruption coverage and the leave revoked or reassigned after the Effective Date of Trip Interruption coverage;
10. Your Host at Your Scheduled Destination being unable to provide Accommodations due to a life-threatening Sickness or Injury, or due to his/her death;
11. a Terrorist Incident that occurs during Your Trip:
 - a) in a city listed on the scheduled itinerary of Your Trip;
 - b) provided Your Travel Supplier (if applicable) did not

offer a substitute itinerary;

12. a theft or loss of passports or travel documents or visas while on Your Trip, specifically required for Your Trip, which is substantiated by a police report;
13. You or Your Traveling Companion are the victim of a Felonious Assault while on Your Trip;
14. A travel alert or travel warning for levels 4 and higher is issued, for cities listed on Your itinerary after Your Effective Date of Your Trip Interruption Coverage, to a Scheduled Destination specifically listed on Your Itinerary. The travel alert/warning, etc. must occur during Your scheduled Trip;
15. You or Your Traveling Companion are involuntarily terminated or laid off by Your or Your Traveling Companion's employer while You are on Your Trip, You or Your Traveling Companion must have been an active employee with the same employer for at least 1 continuous year. This provision is not applicable to temporary or seasonal employment, independent contractors, freelancer or self-employed persons;
16. Financial Insolvency or Financial Default of an entity that directly provides Travel Arrangements, including an Air Common Carrier, cruise line, tour operator, or other travel entity that cause a complete cessation of travel services if the Financial Insolvency or Financial Default occurs more than 14 days following Your Effective Date for Trip Interruption. Benefits will be paid due to Financial Insolvency or Financial Default of an airline only if no alternate transportation is available. If alternate transportation is available, benefits will be limited to the change fee charged to allow You to transfer to another airline in order to get to Your Scheduled Destination.

These benefit(s) will not duplicate any other benefits payable under the policy or any coverage(s) attached to the policy.

Optional Single Supplement

We will reimburse You, up to the Maximum Benefit Amount shown in the Schedule of Benefits, for the additional cost incurred as a result of a change in the per person occupancy rate for prepaid non-refundable Travel Arrangements if a person booked to share Accommodations with You cancels or interrupts his/her Trip due to any of the covered Unforeseen reasons or Other Covered Events shown in Your Trip Cancellation or Trip Interruption section(s) and You do not cancel or interrupt Your Trip.

These benefit(s) will not duplicate any other benefits payable under the policy or any coverage(s) attached to

the policy.

Optional Cancel For Any Reason

We will reimburse You, up to the Maximum Benefit Amount shown in the Schedule of Benefits, for the unused, forfeited, prepaid non-refundable Payments or Deposits You paid for Your Trip, when You cancel Your Trip prior to departure for any reason not otherwise covered by this policy, provided the following conditions are met:

1. You purchase the Cancel for Any Reason Benefit within the Time Sensitive Period; and
2. You cancel Your Trip no later than 48 hours prior to the Scheduled Departure Date of Your Trip.

This Cancel for Any Reason Benefit does not cover penalties associated with any Travel Arrangements not provided by Retail Travel Supplier or the failure of Retail Travel Supplier to provide the bargained-for Travel Arrangements due to cessation of operations for any reason.

These benefit(s) will not duplicate any other benefits payable under the policy or any coverage(s) attached to the policy.

Trip Delay

We will reimburse You, up to the Maximum Benefit Amount shown in the Schedule of Benefits, for the unused, forfeited, prepaid non-refundable Payments or Deposits for the Travel Arrangements, Reasonable Additional Expenses, plus the Additional Transportation Cost paid if Your Trip is delayed at least 6 consecutive hours from the original departure time to:

- a) join Your Trip if You must depart after Your Scheduled Departure Date or travel via alternate travel arrangements;
- b) rejoin Your Trip from the point where You interrupted Your Trip to the next Scheduled Destination; or
- c) transport You to Your originally scheduled return or final destination of Your Trip.

The Trip Delay must occur while coverage is in effect for You due to any of the following covered Unforeseen reason(s).

1. You or Your Traveling Companion are not directly involved in a traffic accident, while en route to Your Scheduled Trip Departure City or Scheduled Destination. The traffic accident must be documented by a police report;
2. Common Carrier delay. (the delay must be

documented by a Common Carrier);

3. a documented theft of Your passports or travel documents specifically required for Your Trip. The theft must be substantiated by a police report;
4. You are hijacked or Quarantined;
5. An unannounced Strike results in a complete cessation of services of a Common Carrier on which You are scheduled to travel which prevents You from reaching the Scheduled Destination;
6. Inclement Weather that causes a: delay or complete cessation of services of a Common Carrier on which You are scheduled to travel at the point of Your Scheduled Departure site which prevents You from reaching Your Scheduled Destination;
7. Due to a Natural Disaster, a mandatory evacuation order or recommendation by local government authorities at Your Scheduled Trip Departure City or Scheduled Destination is issued which prevents You from traveling to/arriving at Your Scheduled Trip Departure City or Scheduled Destination;
8. Security Breach, Civil Disorder or Riot while at an airport or other port for at least 6 consecutive hours preventing You from reaching Your Scheduled Destination or departing on Your Trip.

Receipts must accompany Reasonable Additional Expenses incurred.

These benefit(s) will not duplicate any other benefits payable under the policy or any coverage(s) attached to the policy.

Optional Missed Trip Connection

If You miss Your Trip departure because Your arrival at Your Trip destination is delayed for at least 3 consecutive hours, due to:

1. any delay, cancellation or mechanical breakdown of regularly scheduled Common Carrier must be documented by the Common Carrier;
2. Inclement Weather that is documented;
3. Quarantine, hijacking, Strike, Natural Disaster, terrorism or Civil Disorder or Riot;

We will reimburse You, up to the Maximum Benefit Amount shown in the Schedule of Benefits, for:

1. Reasonable Additional Expenses; and
2. Additional Transportation Cost incurred by You to join the departed Trip; and
3. unused, forfeited, prepaid non-refundable Payments or Deposits paid for the land or water Travel Arrangements You purchased for Your Trip.

These benefit(s) will not duplicate any other benefits payable under the policy or any coverage(s) attached to the policy.

Optional Pet Or Service Animal Return

We will reimburse You, up to the Maximum Benefit Amount shown in the Schedule of Benefits, for the reasonable expense, including the cost of an attendant, if necessary, to return Your domestic Pet(s) or Service Animals who accompanied You on Your Trip to Your Primary Residence in the United States, if while on a Trip, You are hospitalized and unable to travel due to a covered Sickness or Injury. Covered expenses are for transportation expenses only.

Benefit amounts are payable on an aggregate limit for all Pet(s) or Service Animal(s) accompanying You on Your Trip and are not provided per individual Pet or Service Animal.

These benefit(s) will not duplicate any other benefits payable under the policy or any coverage(s) attached to the policy.

Optional Pet Kennel

We will reimburse You, up to a Maximum Benefit Amount shown in the Schedule of Benefits, to cover the necessary additional kennel fees or expenses if You are delayed past the Scheduled Return Date for at least 3 consecutive hours while en route to Your Return Destination. You must have placed Your Pet in a licensed commercial kennel for the duration of Your Trip and are unable to collect Your Pet on the day previously agreed upon with the kennel.

You must provide the following documentation when presenting a claim:

- a) Written confirmation of the reasons for the delay from the Common Carrier whose delay resulted in the loss, including, but not limited to, schedule departure and return times and actual departure and return times;
- b) Written confirmation from the licensed commercial kennel advising the original pick-up date and the actual pick-up date; and
- c) Receipts for the expenses incurred.

This benefit is payable for only one delay per Trip.

These benefit(s) will not duplicate any other benefits payable under the policy or any coverage(s) attached to the policy.

Optional Pet Or Service Animal Travel Medical Expense

We will reimburse You, up to the Maximum Benefit Amount shown in the Schedule of Benefits, if Your Pet or Service Animal, which is accompanying You on a Trip, suffers an Injury or Sickness that requires emergency medical treatment by a Veterinarian.

The Injury or Sickness must first manifest itself or first occur during a Trip, while covered under this policy.

Benefit amounts are payable on an aggregate limit for all Pets or Service Animals accompanying You on Your Trip and are not provided per individual Pet or Service Animal.

Pet or Service Animal Travel Medical Expense Exclusions

In addition to the General Exclusions, the following exclusions apply to the Optional Pet or Service Animal Travel Medical Expense Benefit.

We will not provide benefits for any loss due to, arising or resulting from:

- a) routine physical examinations or routine veterinary care; or
- b) routine veterinary dental care; or
- c) any veterinary service or care provided by You, Your Family Member or Your Traveling Companion; or
- d) veterinary care or treatment which is not Medically Necessary; or
- e) intentional harm to Your Pet or Service Animal caused by You, Your Family Member or Your Traveling Companion; or
- f) traveling for the purpose or intent of securing medical treatment or advise for Your Pet or Service Animal; or
- g) Your Pet's or Service Animal's pregnancy or giving birth; or
- h) Your Pet's or Service Animal's participation in races, shows, or other competitive events.

These benefit(s) will not duplicate any other benefits payable under the policy or any coverage(s) attached to the policy.

Optional Quarantine Kenneling Expense

We will reimburse You, up to the Maximum Benefit Amount shown in the Schedule of Benefits, towards the cost of

Quarantine kenneling if You have obeyed all the rules and requirements of the U.S. Department of Agriculture, or the government authorities at Your Scheduled Destination, but Your covered Pet(s) or Service Animal(s) still have to go into Quarantine due to a Sickness.

These benefit(s) will not duplicate any other benefits payable under the policy or any coverage(s) attached to the policy.

Optional Rental Car Damage And Theft Coverage

We will reimburse You, up to the Maximum Benefit Amount shown in the Schedule of Benefits, if Your Rental Car is damaged while on a Trip due to collision, theft, vandalism, Natural Disaster or any cause beyond Your control while in Your possession, or Your Rental Car is stolen and not recovered. Benefits will be paid for the lesser of:

- a) reasonable and customary cost of repairs and rental charges imposed by the rental company while the vehicle is being repaired (i.e. "loss of use" charges); or
- b) Actual Cash Value of the Rental Car.

Exclusions:

In addition to the General Exclusions and Limitations, the following exclusions and limitations apply to the Rental Car Damage benefit. Unless otherwise shown below, these exclusions and limitations apply to You. Benefits are not payable for any loss due to, arising or resulting from:

1. any loss that occurs if You or anyone traveling with You are in violation of the Rental Car Agreement;
2. any obligation You or Your Traveling Companion or Family Member traveling with You assumed under any agreement (except insurance collision deductible);
3. rentals of trucks, pickups, full-size vans mounted on truck chassis, heavy duty trucks, jeep-type vehicles, campers, trailers, motor bikes, motorcycles, off road vehicles, recreational vehicles or Exotic Vehicles;
4. failure to report the loss to the proper local authorities and the Rental Car company;
5. damage to any other vehicle, structure or person as a result of a covered loss;
6. any loss as the result of or attributed to driving the Rental Car: while under the influence of alcohol, marijuana or any illegal substance or the abuse of a legal substance; while using any medication that recommends abstinence from driving; in a speed competition; for compensation for hire; for illegal trade

purposes, or transporting contraband;

7. any loss as the result of physical damage or loss attributed to: mechanical failure or breakdown of the Rental Car; wear and tear, gradual deterioration, corrosion, rust or freezing; any neglect or abuse of the Rental Car; any dishonest act or conversion; any consequence of war (declared or otherwise); or contamination by a radioactive material.

The following condition applies: Coverage is provided to You, if the Rental Car is damaged while being operated by You at the time the damage occurs and must be listed on the Rental Car Agreement.

These benefit(s) will not duplicate any other benefits payable under the policy or any coverage(s) attached to the policy.

Travel Inconvenience

We will pay You, the amount shown in the Schedule of Benefits, if while on a Trip, any of the following covered Unforeseen reasons occur:

1. **Baggage Delay:** Your Baggage is delayed for 6 hours en route to the Scheduled Destination;
2. **Delay at Security Check-in:** if there is a delay at the security check in that causes You to miss the Flight. You must show proof that You arrived to the airport at least 2 hours before the covered flight;
3. **Flight Cancellation:** the complete cancellation of an Air Common Carrier flight on which You had a confirmed ticket;
4. **Flight Delay:** Your flight at the Scheduled Destination or Return Destination is delayed by 6 or more hours by an Air Common Carrier, based on the arrival time at the ticketed arrival airport. In the event of a dispute regarding the length of the delay, information from the U.S. Department of Transportation or other similar governmental sources will be considered the final authority;
5. **Flight Diversion:** Your Air Common Carrier flight arrives at a different airport than Your originally ticketed destination;
6. **Hotel Late Arrival Benefit:** if You are delayed due to a covered flight delay, flight cancellation, or Tarmac Delay while on a Trip, and as a result of the delay You also miss at least one night's accommodation with pre-paid lodging;
7. **Rental Property Lockout:** if the key(s) to Your vacation Rental Property are lost, stolen or damaged, preventing access to the property for 3 or more hours. It must be substantiated by a report from the Rental Property owner;

The maximum limit payable between all events will not exceed the Travel Inconvenience Benefit limit shown in the Schedule of Benefits.

This benefit may not be combined with Optional Trip Cancellation, Optional Trip Interruption, Trip Delay, Bag Delay, or Optional Emergency Evacuation benefits.

These benefit(s) will not duplicate any other benefits payable under the policy or any coverage(s) attached to the policy.

Travel Inconvenience

We will pay You, the amount shown in the Schedule of Benefits, if while on a Trip, any of the following covered Unforeseen reasons occur:

1. Travel Delay

- a) If Your Trip is delayed for 3 hours or more, We will reimburse You, up to \$25 for expenses incurred, that are directly related to internet usage fee during the time You are experiencing a Common Carrier delay at the airport. Receipts for the expense incurred must be submitted for reimbursement;
- b) If You experience an Air Common Carrier delay of 3 hours or more, while on Your Trip, We will reimburse You for airline club admission expenses, up to \$50, at a sponsored airline club at the airport. You must submit receipts for the expense incurred for reimbursement.

The maximum limit payable between all events will not exceed the Travel Inconvenience Benefit limit shown in the Schedule of Benefits.

This benefit may not be combined with Optional Trip Cancellation, Optional Trip Interruption, Bag Delay, or Optional Emergency Evacuation benefits.

These benefit(s) will not duplicate any other benefits payable under the policy or any coverage(s) attached to the policy.

Optional Travel Inconvenience

We will pay You, the amount shown in the Schedule of Benefits, if while on a Trip, any of the following covered Unforeseen reasons occur:

1. Closed Attractions

- a) amusement park at Your Scheduled Destination closes all or part of its facilities for at least 1 day due to

park equipment breaks down, Inclement Weather or Natural Disaster causing cessation of services during operating hours;

2. **Beach Closure:** the beach at Your Scheduled Destination is closed for at least 12 consecutive hours by government authorities;
3. **Rainy Vacation:** the beach area at Your Scheduled Destination experiences rainfall during 50% or more of Your stay at that location; weather reports at Your Scheduled Destination will be required;
4. **Rental Car Breakdown:** Your Rental Car breaks down, causing You to arrive at least 12 hours late at the Scheduled Destination or Return Destination; proof of Rental Car breakdown will be required;
5. **Credit/Debit Card Cancelled:** Your credit or debit card is cancelled while on Your Trip for reasons outside of Your control;
6. **Vacation Rental Distributors Inconvenience:** the lodging is not what was advertised and You decided not to stay. This needs to be verified by the advertisement, invoice and request for cancellation.

The maximum limit payable between all events will not exceed the Travel Inconvenience Benefit limit shown in the Schedule of Benefits.

This benefit may not be combined with Optional Trip Cancellation, Optional Trip Interruption, Trip Delay, Bag Delay, or Optional Emergency Evacuation benefits.

These benefit(s) will not duplicate any other benefits payable under the policy or any coverage(s) attached to the policy.

Optional Rental Property Damage Liability

We will reimburse You, up to the Maximum Benefit Amount shown in the Schedule of Benefits, if You occupy an Accommodation and You unintentionally, through events beyond Your control, damage an Accommodation or its contents during the Trip. We will reimburse You for Your liability for damage for the lesser of the cost of repairs or the cost to replace the damaged items, subject to the following:

1. this benefit applies only to any liability or obligation You expressly assume under a written agreement for an Accommodation's use during Your Trip, provided the agreement is executed by You prior to Your occupancy of the Accommodation; and
2. You are adjudged or determined to be responsible for the loss or damage to any such Accommodation or its contents.

Coverage is provided to You and all travelers under the Accommodation reservation during Your Trip, provided You

are listed on the rental agreement.

Rental Property Damage Liability Benefit Exclusions:

In addition to the General Exclusions, the following exclusions apply to this benefit. Unless otherwise shown below, these exclusions apply to You or Your Traveling Companion. Benefits are not payable for any loss due to, arising or resulting from:

1. Inclement Weather or Natural Disaster;
2. intentional acts by You or Your Traveling Companion;
3. gross negligence, Willful and Wanton conduct by You or Your Traveling Companion;
4. alcohol intoxication above the statutory legal limit that Your state law allows at Your location at the time of loss;
5. any loss to motor homes; recreational vehicles; trailers; campers; boats or other watercraft; or any other vehicles or conveyances, whether motorized or not;
6. normal wear and tear of an Accommodation or its content assigned to that Accommodation that You or Your Traveling Companion occupy during Your Trip;
7. any damage that occurs as result of an criminal, fraudulent or intentional acts or activities of You or Your Traveling Companion that is in violation of the written rental agreement for the rental of an Accommodation used by You during Your Trip;
8. damage to any other property or person as a result of a loss;
9. loss, theft or damage to any Baggage and Personal Effects owned by You or Your Traveling Companion or brought on the covered Trip by You or Your Traveling Companion;
10. loss, theft or damage caused by any person other than You or Your Traveling Companion unless substantiated by a police report;
11. damage arising from pets or other animals accompanying You or Your Traveling Companion on this Trip;
12. damage or theft of boats, or damage to docks, piers, pools or other structures not part of the dwelling unit;
13. loss, theft or damage to an Accommodation if the number of persons occupying the property exceeds the rental property's occupancy limit;
14. loss of use of the Rental Property;
15. any cause, if You do not report the Loss or damage to the staff of the Accommodation by the rental termination date;
16. theft without a valid police report.

These benefit(s) will not duplicate any other benefits payable under the policy or any coverage(s) attached to the policy.

Optional Medical Evacuation And Repatriation Of Remains

Benefits will be paid, up to the Maximum Benefit Amount shown in the Schedule of Benefits, when You suffer a Sickness, Injury, or loss of life, during Your Trip, for the following:

Emergency Medical Evacuation

We will pay for the Usual and Customary transportation expenses for an Emergency Medical Evacuation, to the nearest suitable Hospital or medical facility where Medically Necessary treatment is available to treat an Unforeseen Sickness or Injury provided:

1. the local attending Physician and Our designated Travel Assistance Services Provider determine that Your condition is acute, severe or life threatening; and
2. that adequate Medically Necessary treatment is not available in Your immediate area.

Medical Repatriation

Following an Emergency Medical Evacuation or a covered Injury or Sickness, We will pay for Medical Evacuation expenses to return You to Your point of origin, Your Primary Residence, or to a Hospital of Choice or medical facility closest to Your Primary Residence capable of providing continued treatment, if Your local attending Physician and Our designated Travel Assistance Services Provider determine that it is Medically Necessary.

We will pay for one of the following methods of transportation, as pre-approved (prior to the evacuation) and arranged by Us or Our designated Travel Assistance Services Provider:

- a) one-way economy transportation;
- b) commercial air upgrade to business or first class, less refunds from Your unused transportation tickets;
- c) other covered land or air transportation including, but not limited to, commercial stretcher, Medical Escort, or the contracted charges for air ambulance.

Transportation must be via the most direct, efficient and economical method of conveyance. In all cases, where practical, economy fare will be utilized. If possible, Your Common Carrier tickets will be used.

We will also pay a benefit for Usual and Customary expenses incurred for a Medical Escort's transportation and accommodations if an onsite attending Physician recommends in writing that a Medical Escort accompany You.

Medical Escort means a medically trained professional

who is approved by Us or Our designated Travel Assistance Services Provider, and is contracted to accompany and provide medical care to a sick or injured person while they are being transported.

Hospital of Choice: You may choose to be transported to a Hospital in a city within the United States of America other than the city of Your Primary Residence. The maximum amount payable is limited to the cost of transportation to Your Primary Residence.

Repatriation of Remains

Benefits will be paid for covered Repatriation Expenses incurred, up to the Maximum Benefit Amount shown in the Schedule of Benefits, to return Your body to Your city of Primary Residence or Your origination point or to the place of burial in the United States of America if You die during Your Trip.

Repatriation Expenses means:

- a) embalming or local cremation; and
- b) associated temporary storage costs for up to 30 days, or until local authorities of the country/ state in which the death occurred, will permit further transportation of the body, whichever is later; and the most economical coffin or receptacle adequate to transport the remains;
- c) the cost of transportation of the remains, by the most direct and economical conveyance and route possible, to: 1) the nearest location where the body can be embalmed or cremated, if not locally available; and/or 2) the receiving funeral home or morgue, at the Return Destination, or a different place of burial within United States; and
- d) the cost for the creation and transmission of necessary documentation required to transport the body, such as a death certificate, autopsy or police report

Transportation expenses for the Emergency Medical Evacuation and Medical Repatriation must be authorized and arranged in advance by Us or Our designated Travel Assistance Services Provider.

In the event that Your Injury or Sickness prevents for You to obtain prior authorization of the Emergency Medical Evacuation, Medical Repatriation and Repatriation of Remains, You must make all efforts to notify Us or Our designated Travel Assistance Services Provider as soon as reasonably possible.

In the event You have not contacted Us or Our designated Travel Assistance Services Provider to arrange for Emergency Medical Evacuation, Medical Repatriation and Repatriation of Remains, benefits will be limited to the amount We would have paid had We or Our designated Travel Assistance Services Provider been contacted and

related services pre-approved.

Return Transportation: If We have previously evacuated You to a medical facility, We will reimburse Your airfare costs, less refunds from Your unused transportation tickets, from that facility to Your Return Destination or Primary Residence, within 180 days from Your original Scheduled Return Date. Airfare costs will be based on medical necessity or same class as Your original tickets.

Transportation of Children/Child: If You die or are Hospitalized for more than 7 consecutive days following an Emergency Medical Evacuation or Injury and Sickness that occurred during Your Trip, We will pay up to the cost of a single one-way economy transportation ticket, or same class as the original transportation ticket, less the value of any applied credit from any unused return travel tickets for each person, to return Your Children/Child who were accompanying You on Your Trip (and any accompanying minor persons under Your care) who are left unattended by Your death or Hospitalization to their Primary Residence or to Your residence in the United States, including the cost of an attendant, if considered necessary by Us or Our designated Travel Assistance Services Provider.

Bedside Visit Transportation to Join You: If You are or will be Hospitalized for more than 7 consecutive days following an Emergency Medical Evacuation or Injury and Sickness that occurred during Your Trip, We will pay, up to the cost of a single round-trip economy transportation ticket, up to the Maximum Benefit Amount shown in the Schedule of Benefits, for Reasonable Additional Expenses for one person chosen by You to visit Your bedside, provided You are traveling alone and Emergency Medical Evacuation is not imminent.

These benefit(s) will not duplicate any other benefits payable under the policy or any coverage(s) attached to the policy.

Section V Protection For Your Belongings

Baggage And Personal Effects

We will reimburse You, up to the Maximum Benefit Amount shown in the Schedule of Benefits, if Your Baggage and Personal Effects, which are lost, stolen, damaged or destroyed during Your Trip or while checked with a Common Carrier less any amount paid or payable by a Common Carrier, hotel, Travel Supplier or any other party responsible for Your loss, provided You have taken all reasonable measures to protect, save and/or recover Your property at all times.

We will also reimburse You, up to the Maximum Benefit Amount shown in the Schedule of Benefits, for fees associated with the replacement of Your passport, visas and other travel documents which are lost, stolen, damaged or destroyed during Your Trip and for charges and interest incurred due to unauthorized use or replacement of Your lost or stolen credit cards if such use or loss occurs during Your Trip, subject to verification that You have complied with all conditions of the credit card company.

Valuation and Payment of Loss:

the lesser of the following amounts will be paid:

- a. the Actual Cash Value as determined by Us; or
- b. the cost to repair or replace the item with material of a like kind and quality.

not to exceed the Maximum Benefit Amount shown in the Schedule of Benefits.

Items subject to Special Limitations

The following items are subject to the maximum combined amount(s) shown in the Schedule of Benefits: jewelry, precious or semi-precious gems, decorative or personal articles consisting in whole or in part of silver, gold, or platinum, watches, furs or articles trimmed with fur, cameras and camera equipment, computers, and other digital or electronic equipment or media.

These benefits will not duplicate any other benefits payable under the policy or any coverage(s) attached to the policy.

Optional Sports Equipment

We will reimburse You, up to the Maximum Benefit Amount shown in the Schedule of Benefits, to replace Your sports equipment, if lost, stolen, damaged or destroyed during Your Trip.

These benefits will not duplicate any other benefits payable under the policy or any coverage(s) attached to the policy.

Optional Golf Equipment

We will reimburse You, up to the Maximum Benefit Amount shown in the Schedule of Benefits, to replace Your golf equipment, if lost, stolen, damaged or destroyed during Your Trip.

These benefits will not duplicate any other benefits payable under the policy or any coverage(s) attached to the policy.

Optional Business Equipment

We will reimburse You, up to the Maximum Benefit Amount shown in the Schedule of Benefits, to replace Your laptop, cell phone or other Business Equipment owned by or leased to You, if lost, stolen, damaged or destroyed during Your Trip.

The laptop, cell phone or other business equipment must accompany You during Your Trip.

These benefits will not duplicate any other benefits payable under the policy or any coverage(s) attached to the policy.

Baggage Delay

We will reimburse You, up to the Maximum Benefit Amount shown in the Schedule of Benefits, for the cost of Necessary Personal Items purchased by You while on Your Trip, if Your checked Baggage is delayed or misdirected by a Common Carrier for at least 12 consecutive hours or more from Your time of arrival at a Scheduled Destination other than Your Return Destination.

Necessary Personal Items means replacement for clothing or toiletry which are included in Your Baggage and Personal Effects and are required for Your Trip. Necessary Personal Items do not include jewelry, perfume or alcohol.

These benefit(s) will not duplicate any other benefits payable under the policy or any coverage(s) attached to the policy.

EXCLUSIONS AND LIMITATIONS

apply to Baggage and Personal Effects and Baggage Delay:

We will not provide benefits for any loss or damage for the following items:

- a. animals;
- b. automobiles and automobile equipment;
- c. boats or other vehicles or conveyances;
- d. trailers;
- e. motors;
- f. aircraft;
- g. bicycles, except when checked as baggage with a Common Carrier;
- h. household effects and furnishings;
- i. antiques and collectors' items;
- j. eyeglasses, sunglasses, contact lenses, artificial teeth, dentures, dental braces, dental bridges, retainers or other orthodontic devices or hearing aids;
- k. artificial limbs or other prosthetic devices;
- l. prescribed medications;

- m. keys, money, stamps and credit cards (except as otherwise specifically covered herein);
- n. securities, stamps, tickets and documents (except as coverage is otherwise specifically provided herein);
- o. professional or occupational equipment or property, whether or not electronic business equipment;
- p. sports equipment if the loss results from the use thereof.

Losses not covered:

We will not provide benefits for any loss or damage caused by or resulting from:

- a. breakage of brittle or fragile articles;
- b. wear and tear or gradual deterioration;
- c. confiscation or appropriation by order of any government or custom's rule;
- d. theft or pilferage while left in any unlocked or unattended vehicle;
- e. property illegally acquired, kept, stored or transported;
- f. Your negligent acts or omissions;
- g. property shipped as freight or shipped prior to the Scheduled Departure Date;
- h. electrical current, including electric arcing that damages or destroys electrical devices or appliances.

or hotel room, not already included in the cost of Your Trip, if recommended by Your attending Physician and approved by Us or Our designated Travel Assistance Services Provider as a substitute for a hospital room for recovery from Your Injury or Sickness;

- 3. emergency dental treatment incurred during Your Trip due to an Accidental Injury to natural teeth. Dental expenses incurred after Your Trip is completed are not covered;
- 4. local transportation expense to and/or from a Hospital.

We will not pay benefits in excess of the Usual and Customary level of charges. We will not cover any expenses provided by another party at no cost to You or already included within the cost of Your Trip.

Advance Payment: If You require admission to a Hospital or treatment at a clinic, Our designated Travel Assistance Services Provider will arrange advance payment (directly to the provider) necessary for Your admission to a Hospital because of a covered Injury or Sickness, up to the Maximum Benefit Amount shown in the Schedule of Benefits, provided You agree to reimburse Us if it is determined that Your Medical Expense claim is not covered.

These benefit(s) will not duplicate any other benefits payable under the policy or any coverage(s) attached to the policy.

Section VI Travel Insurance Benefits

Optional Accident & Sickness Medical Expense Benefit

Benefits will be paid for Medical Expenses incurred by You, up to the Maximum Benefit Amount shown in the Schedule of Benefits, subject to the following:

- a. Sickness must first commence or manifest itself and Injury must first occur while on Your Trip (of a duration of 180 days or less for Sickness);
- b. only Medical Expenses incurred by You during Your Trip (of a duration of 180 days or less for Sickness) will be reimbursed. Medical Expenses incurred after You return from Your Trip are not covered.

Medical Expenses means expenses incurred only for the following:

- 1. medical services (including charges for anesthetics, x-ray examinations or treatments, and laboratory tests) and supplies, prescription drugs, and therapeutic services ordered or prescribed by a Physician as Medically Necessary for treatment;
- 2. Hospital or ambulatory medical-surgical center services, including expenses for a cruise ship cabin

Section VIII General Definitions

Accident means a sudden, unexpected unusual specific event that occurs at an identifiable time and place, and shall also include exposure resulting from a mishap to a conveyance in which You are traveling.

Actual Cash Value means current replacement cost of such item of like kind and quality.

Accommodation(s) means any establishment used for the purposes of temporary, overnight lodging such as apartment, condominium, or other vacation or timeshare residential unit(s).

Additional Transportation Cost means the actual cost incurred for one-way economy transportation (or for the original class of fare, if the original tickets were for a higher class of fare) by Common Carrier by the most direct route, less any refunds paid or payable, for Your unused original tickets.

Adventure or Extreme Activities means B.A.S.E. jumping, bull riding, running of the bulls, free diving, bungee jumping, hot air ballooning, parachuting, skydiving, cliff diving, fly-by-wire, paragliding, hang gliding, heli-skiing,

heli-snowboarding, wingsuit flying, rock climbing without equipment, bodily contact sports, Mountain Climbing over 9,000 feet (2,700 meters), motor sport or motor racing, multi-sport endurance competitions, parkour, scuba diving if the depth exceeds 131 feet (40 meters) and any activity materially similar to the above.

Air Common Carrier means an air conveyance operated under a license for the transportation of passengers for hire.

Baggage and Personal Effects means luggage and personal possessions taken by You on Your Trip, whether owned, borrowed, or rented.

Business Equipment means business property taken by You on Your Trip:
Laptops; visual aids; projectors; tablets; smartphones, or other electronic equipment used for business purposes. Coverage applies to items that are owned by You, or by Your employer.

Business Partner means a person who is: (1) involved with You in a legal partnership; and (2) actively involved in the daily management of the business.

Children/Child means a person:

1. under age of 17 and primarily dependent on You for support and maintenance; or
2. who is at least age seventeen (17) but less than age twenty-six (26) and primarily dependent on You for support and maintenance.

The age limit does not apply to a child who is incapable of self-sustaining employment by reason of mental or physical incapacity.

Civil Disorder or Riot means a public disturbance by a person or persons acting in revolt, coup, rebellion or resistance against an established government or civil authority or involvement in acts of violence that causes immediate danger, damage, or injury to others or their property.

Common Carrier means an air, land, or sea conveyance operated under a license for the transportation of passengers for hire not including taxicabs or rented, leased or privately owned motor vehicles.

Complications of Pregnancy means conditions (when the pregnancy is not terminated) whose diagnoses are distinct from pregnancy but are adversely affected by pregnancy or are caused by pregnancy. These conditions include hyperemesis gravidarum, preeclampsia, eclampsia, gestational diabetes, gestational hypertension, acute nephritis, nephrosis, cardiac decompensation, and missed abortion. Complications of pregnancy also include non-elective cesarean section, ectopic pregnancy which is terminated and spontaneous termination of pregnancy, which occurs during a period of gestation in which a viable

birth is not possible.

Complications of pregnancy do not include Physician-prescribed rest during the period of pregnancy (except due to conditions noted above), false labor, occasional spotting, morning sickness, elective abortion, and similar conditions associated with the management of a difficult pregnancy, not constituting a categorically distinct complication of pregnancy.

Deductible means the amount of charges that must be incurred by You before benefits become payable. The amount of the Deductible is shown in the Schedule of Benefits for each benefit to which a Deductible applies.

Domestic Partner means an opposite or a same-sex partner who is at least eighteen (18) years of age and has met all of the following requirements for at least 10 months:

- a. resides with You;
- b. shares financial assets and obligations with You;
- c. is not related by blood or adoption to You to a degree of closeness that would prohibit a legal marriage;
- d. neither You nor domestic partner is married to anyone else, nor has any other domestic partner.

We may require proof of the Domestic Partner relationship in the form of a signed and completed Affidavit of Domestic Partnership or whatever documentation as required by the state in which You reside.

Effective Date means the date and time Your coverage begins, as indicated in When Coverage Begins and Ends section of this policy.

Elective Treatment And Procedures means any medical treatment or surgical procedure that is not medically necessary including any service, treatment, or supplies that are deemed by the federal, or a state or local government authority, or by Us to be research or experimental or that is not recognized as a generally accepted medical practice.

Exotic Vehicle means antique cars that are over 20 years old or have not been manufactured for 10 or more years or any vehicle with an original Manufacturer's Suggested Retail Price (MSRP) greater than \$50,000.

Family Member means the following relatives of You or Your Traveling Companion:

- a. Spouse, Domestic Partner;
- b. children, children-in-law, step-children, foster children, ward or legal ward;
- c. siblings, siblings-in-law, step-siblings;
- d. parents, parents-in-law, step-parents, legal guardians, or guardians;
- e. grandparents, grandchildren;
- f. aunts or uncles;

g. nieces or nephews.

Felonious Assault means an act of violence against You or Your Traveling Companion, which requires medical treatment in a Hospital, and is substantiated by a police report.

Financial Default or Financial Insolvency means the total cessation of operations due to insolvency, with or without the filing of a bankruptcy petition or the total cessation or complete suspension of operations following the filing of a bankruptcy petition, whether voluntary or involuntary by an airline, or cruise line, tour operator or other travel provider provided the Financial Default or Financial Insolvency occurs more than 14 days following Your Effective Date for Your Trip Cancellation Benefits.

Hospital means a facility that:

- is licensed or recognized as a general hospital by the proper authority of the state in which it is located;
- is recognized as a general hospital by the Joint Commission on the Accreditation of Hospitals;
- operated for the care and treatment of resident in-patients with a registered graduate nurse (RN) always on duty and with a laboratory and X-ray facility;

A **Hospital** does not include:

- a facility which treats drug, marijuana or alcoholism addictions;
- a facility that is, other than incidentally, a clinic, a rest home, nursing home, convalescent home, home health care, or home for the aged, nor does it include any ward, room, wing or other section of the Hospital that is used for such purposes.

Hospitalized or Hospitalization means admitted to a Hospital overnight or where the patient is charged by the Hospital for a minimum of one day of inpatient charges.

Host at Scheduled Destination means the person with whom You are sharing prearranged overnight Accommodations in the host's home or has made previous arrangements to stay at the host's personal residence during Your Trip.

Inclement Weather means any severe weather condition that delays the scheduled arrival or departure of a Common Carrier or causes closure of public roadways by local or government authorities.

Injury(ies)/Injured means a bodily injury caused by an Accident occurring while Your coverage under this policy is in force and resulting directly and independently of all other causes of loss covered by this policy. Injury must not be caused by, or result from, Sickness. The injury(ies) requires examination and treatment and must be verified by a Physician.

You, Your means:

the person that is scheduled to participate on a Trip; for whom any required enrollment has been completed and the required premium has been paid.

Medically Fit to Travel means based on assessment by a treating Physician, following Your Injury or Sickness that occurs while on Your Trip, You are medically able to travel.

Medically Necessary means that a treatment, service, or supply:

- is essential for diagnosis, treatment, or care of the Injury or Sickness for which it is prescribed or performed;
- meets generally accepted standards of medical practice;
- is ordered by a Physician or licensed Veterinarian and performed under his or her care, supervision, or order; or
- is not used for the convenience of You, Physician, other providers, or any other person.

Mental, Nervous or Psychological Condition or Disorder means a mental or nervous health condition including, but not limited to: anxiety, depression, and neurosis, panic attack, phobia (such as fear of flying, fear of terrorism, fear of disease, etc.), psychosis; or any related physical manifestation. Mental, Nervous or Psychological Condition or Disorder does not include drug addiction, marijuana addiction, or alcohol addiction.

Mountain Climbing means the ascent or descent of a mountain requiring the use of specialized equipment, including, but not limited to, ropes, belay devices, pick-axes, anchors, pitons, bolts, crampons, carabiners, and lead or top-rope anchoring equipment.

Natural Disaster means a flood, tsunami, cyclone, hurricane, tornado, earthquake, mudslide, avalanche, landslide, volcanic eruption, sandstorm, sinkhole, named winter storm, severe hail storm, fire, wildfire or blizzard; all of which are due to natural causes.

Payments or Deposits means the cash, check, or credit card amounts actually paid for Your Trip. Certificates, vouchers, discounts and/or credits applied (in part or in full) towards the cost of Your Travel Arrangements are not Payments or Deposits as defined herein.

Partial Hospitalization means an outpatient program specifically designed for the diagnosis or active treatment of a serious mental disorder when there is a reasonable expectation for improvement or when it is necessary to maintain a patient's functional level and prevent relapse or full hospitalization. Partial Hospitalization programs are usually furnished by a Hospital as distinct and organized intensive ambulatory treatment service of less than 24-hour daily care.

Pet(s) means Your domesticated dog(s) or cat(s) that live

with You in Your Primary Residence as companions.

Physician means a licensed practitioner of medical, surgical, or dental services acting within the scope of his/her license in the jurisdiction where the services are rendered. The treating Physician cannot be You, a Traveling Companion, a Family Member, or a Business Partner.

Pre-Existing Medical Condition means an illness, disease, or other condition during the 180-day period immediately prior to the date Your coverage is effective for which You, Your Traveling Companion, Business Partner, or Family Member:

1. received or received a recommendation for a test, examination, or medical treatment for a condition which first manifested itself, worsened or became acute, or had symptoms which would have prompted a reasonable person to seek diagnosis, care or treatment; or
2. took or received a prescription for drugs or medicine. Item (2) of this definition does not apply to a condition which is treated or controlled solely through the taking of prescription drugs or medicine and remains treated or controlled without any adjustment or change in the required prescription throughout the 180 day period before coverage is effective under this policy.
3. Change in prescribed medication means the dosage or frequency of a medication has been reduced, increased, stopped and/or new medications have been prescribed due to the worsening of an underlying condition that is being treated with the medication, unless the change is:
 - a) between a brand name and a generic medication with comparable dosage; or
 - b) an adjustment to insulin or anti-coagulant dosage.

Primary Residence means Your fixed, permanent and main home for legal and tax purposes.

Quarantined means You or Your Traveling Companion are forced into strict medical isolation by a recognized government authority, their authorized deputies, medical examiners or Physician to prevent the spread of the disease due to You or Your Traveling Companion either having, or being suspected of having an contagious disease, infection or contamination.

Reasonable Additional Expenses means reasonable expenses for meals, essential telephone calls, local transportation, and lodging which are necessarily incurred as the result of a Common Carrier or Trip Delay and which are not provided by the Common Carrier or any other party free of charge.

Rental Car means a private passenger vehicle including mini-vans, and sport utility vehicles rented from a rental car agency and being used solely for transportation on public roads.

Rental Car Agreement means the entire contract into which You enter when renting a vehicle from a rental car agency that describes in full all of the terms and conditions of the rental, as well as the responsibility of all parties under the rental car agreement.

Rental Property means a hotel room, vacation home, or other rental property You booked for Your stay during Your Trip.

Return Destination means Your final destination as shown in the enrollment, itinerary or other travel documents and the place to which You expect to return from Your Trip.

Scheduled Departure Date means the date on which You are originally scheduled to leave on Your Trip. This date is specified in the enrollment, itinerary or other travel documents.

Scheduled Destination means as shown in the enrollment, itinerary or other travel documents where You expect to travel to on Your Trip other than Return Destination.

Scheduled Return Date means the date on which You are scheduled to return to the point where Your Trip started or to a different specified Return Destination.

Scheduled Trip Departure City means the city from which You are originally scheduled to depart on the Trip.

Security Breach means any incident involving unauthorized and uncontrolled access by an individual or prohibited item into a sterile area or secured area of an airport that is determined by TSA or other airport security officials to present an immediate danger.

Service Animal means any guide dog, signal dog, or other animal individually trained to work or perform tasks for the benefit of an individual with a disability, including, but not limited to, guiding persons with impaired vision, alerting persons with impaired hearing to intruders or sounds, pulling a wheelchair, or fetching dropped items.

Sickness means an illness or disease of the body, that commences while Your coverage is in effect and requires examination, diagnosis and treatment by a Physician.

An illness or disease of the body that first manifests itself and then worsens or becomes acute prior to the Effective Date of Your coverage is not a Sickness as defined herein and is not covered by the policy.

Sickness does not include any Mental, Nervous or Psychological, Condition or Disorders including but not limited to anxiety, depression, neurosis, phobia, psychosis; or any related physical manifestation. Sickness does not include drug addiction, marijuana addiction, or alcohol addiction.

Spouse means Your lawful spouse, if not legally separated

or divorced. For the purposes of this policy, the term spouse includes civil union partner whenever used.

Strike means a labor disagreement resulting in a stoppage of work which:

- a. is unannounced and unpublished at time this policy is purchased;
- b. is organized, and legally sanctioned by a labor union or other organized association of workers, in a trade or profession, formed to protect and further their rights and interests; and
- c. interferes with the normal departure and arrival of a Common Carrier.

Tarmac Delay means the holding of an aircraft on the ground either before taking off, after gate departure or after landing with no opportunity for its passengers to deplane.

Terrorist Incident means an act of violence committed by a Foreign Terrorist Organization (designated or recognized as such by the US State Department) that results in property damage, injury or loss of life.

Third Party(ies) means any person, corporation or other entity (except You, Rental Property and Us).

Time Sensitive Period means insurance must be purchased within 14 days of the date Your initial Payments or Deposits for Your Trip is received.

Travel Arrangements means: (a) transportation; (b) Accommodations; and (c) other specified services arranged for Your Trip by Your Travel Supplier.

Air arrangements covered by this definition also include any direct round trip air flights booked by others, to and from the Scheduled Trip departure and return cities, provided the dates of travel for the air flights are within 7 total days of the scheduled Trip dates.

Travel Assistance Services Provider means the Assistance Company as listed within the Description of Coverage.

Traveling Companion means a person or persons whose name(s) appear(s) with Yours on the same Travel Arrangements and who, during Your Trip, will accompany You. A group or tour organizer, sponsor or leader is not a Traveling Companion as defined, unless sharing accommodations in the same room, cabin, condominium unit, apartment unit or other lodging with You.

Travel Supplier means any entity or organization that coordinates or supplies Travel Arrangements for You.

Trip means a scheduled Trip for which coverage is elected and the premium paid and all Travel Arrangements are arranged prior to the Scheduled Departure Date.

Trip Cost means the amount You paid for Your Travel Arrangements.

Unforeseen means not known, anticipated or reasonably expected, and occurring after the effective date of the benefit under which the claim is being made.

Uninhabitable means:

- (1) the building structure itself is unstable and there is a risk of collapse in whole or in part; or
- (2) there is exterior or structural damage allowing elemental intrusion, such as rain, wind, hail or flood; or
- (3) immediate safety hazards have yet to be cleared, such as debris or downed electrical lines; or
- (4) the property is without electric gas, sewer service or water; or
- (5) local government authorities have issued a mandatory evacuation; or
- (6) the destination is inaccessible by the mode of transportation as shown on the travel documents or itinerary.

Usual and Customary means the comparable level of charges for similar treatment, services and supplies in the geographic area where treatment, services or supplies are provided or performed.

Vermin means small animals and insects that are harmful or annoying and are often difficult to control.

Veterinarian means a licensed practitioner pertaining to the medical and surgical treatment of animals, especially domesticated animals acting within the scope of his/her license. The treating Veterinarian may not be You, a Traveling Companion or a Family Member.

Section IX Exclusions And Limitations

Unless otherwise shown below, these exclusions apply to You, Your Traveling Companion, Family Member, or Service Animal scheduled and booked to travel with You.

The following exclusion(s) apply(ies) to the Optional Trip Cancellation and Optional Trip Interruption.

We will not pay for any loss or expense caused due to, arising or resulting from:

1. a Pre-Existing Medical Condition, as defined in the policy.

The following exclusions apply to the Optional Medical Expense benefits.

We will not pay for any loss or expense caused due to, arising or resulting from:

1. routine physical examinations or routine dental care;
2. traveling for the purpose or intent of securing medical treatment or advice;
3. Elective Treatment and Procedures;
4. Normal pregnancy (except Complications of Pregnancy) or childbirth, except as specifically covered under Trip Cancellation or Trip Interruption or elective abortion;
5. a Mental, Nervous or Psychological Condition or Disorder unless Hospitalized or Partially Hospitalized while the policy is in effect;
6. Your participation in Adventure or Extreme Activities, riding or driving in any races, or participation in speed or endurance competition or events, except as a spectator.

This exclusion will be waived if Medical Bundle 1C or Medical bundle 1D is elected and any required cost is paid;
7. Your participation in an organized athletic or sporting competition, contest, or stunt under contract in exchange for an agreed-upon salary or compensation. This does not include athletes participating in exchange for a scholarship or tuition.

In addition to any applicable benefit-specific exclusion, the following general exclusions apply to all losses and all benefits.

We will not pay for any loss or expense caused due to, arising or resulting from:

1. suicide, attempted suicide or any intentionally self-inflicted injury of You, a Traveling Companion, Family Member or Business Partner booked and scheduled to travel with You, while sane or insane;
2. being under the influence of drugs or narcotics, unless administered upon the advice of a Physician as prescribed;
3. activities, losses, or claims involving or resulting from possession, production, processing, sale, or use of marijuana, illegal drugs, alcohol or substances are excluded from coverage;
4. war or act of war, including invasion, acts of foreign enemies, hostilities between nations (whether declared or undeclared), or civil war;
5. the commission of or attempt to commit a felony or being engaged in an illegal occupation by You, a Traveling Companion, Family Member, or Business Partner;

6. directly or indirectly, the actual, alleged or threatened use, discharge, dispersal, seepage, migration, escape, release or exposure to any hazardous biological, chemical, nuclear radioactive weapon, device, material, gas, matter or contamination;
7. piloting or learning to pilot or acting as a member of the crew of any aircraft;
8. a loss or damage caused by detention, confiscation or destruction by customs.

Pre-Existing Medical Condition Exclusion Waiver

We will waive the Pre-Existing Medical Condition exclusion if all of the following conditions are met:

- a. Your premium for this policy and enrollment form is received within the Time Sensitive Period; and
- b. You are medically able and not disabled from travel at the time Your premium is paid based on assessment of a Physician.

Section X Premiums

PREMIUMS: Coverage is not effective unless all premium due has been paid prior to the date of loss. In the event the premium paid for coverage is less than the required premium for coverage, benefits will be paid indirect proportion of the actual amount paid to the required premium due.

Section XI Claims Procedures

Your duties in the event of a loss:

For Optional Trip Cancellation, Optional Cancellation For Any Reason, and Optional Trip Interruption You must:

Immediately, or as soon as possible, call Your Travel Supplier and the program administrator to report Your cancellation or interruption to avoid non-covered charges due to late reporting.

If the Insured is prevented from taking their Trip as scheduled due to Sickness or Injury, the Insured should obtain medical care immediately. We require an examination and treatment by a Physician prior to cancellation or interruption. Provide all unused transportation tickets, official receipts, etc.

For Trip Delay or Optional Missed Trip Connection

You must obtain any specific dated documentation, which provides proof of the reason for delay or missed connection (airline or cruise line forms, medical statements, etc.). Submit this documentation along with Your trip itinerary and all receipts for additional expenses incurred.

For Optional Medical Expenses You must:

1. provide Us with all receipts from the provider of services and reports for medical and/or dental expenses claimed. Stating the amount paid and listing the diagnosis and treatment.

For Baggage and Personal Effects

In case of lost, stolen, damaged, destroyed or delayed Baggage and Personal Effects, You must:

1. report theft losses to police or other local authorities as soon as possible and obtain their written report of Your loss;
2. report the baggage delay to the Common Carrier as soon as possible. Submit proof of the report, documentation confirming delivery as well as reimbursement and receipts for essential items;
3. take reasonable steps to protect Your Baggage and Personal Effects;
4. allow Us to examine the damaged Baggage and Personal Effects and/or We may require the damaged item to be sent in the event of payment;
5. provide original receipts for any items over \$500, if available;
6. original receipts (if available) and a complete list of stolen, damaged or lost item(s) must be provided along with proof of loss providing amount of loss, date, time and cause of loss, and a repair estimate, if the item(s) is damaged.

For Optional Rental Car Damage and Theft Coverage

You must:

1. take all necessary and reasonable steps to protect the vehicle and prevent further damage to it;
2. report the loss to the appropriate local authorities and the rental company as soon as possible;
3. obtain all information on any other party involved in an automobile accident, such as name, address, insurance information and driver's license number;
4. provide Us all documentation such as rental agreement, police report and damage estimate.

For Optional Rental Property Damage Liability You must:

1. take all reasonable, necessary steps to protect the

property and its content and prevent further damage to it;

2. report the loss in writing prior to check-out to the staff responsible for managing the Accommodation;
3. provide Us all documentation such as the lease agreement, police report and damage estimate.

Section XII How To File A Claim

Notice of Claim: Notice of claim must be reported to Us or Our authorized representative within 20 days after a loss occurs or as soon as is reasonably possible. You or someone on Your behalf may give the notice. The notice should be given to Us or Our authorized representative and should include sufficient information to identify You.

Claim Forms: When notice of claim is received by Us or Our authorized representative, forms for filing proof of loss will be furnished. If these forms are not sent within 15 days, the proof of loss requirements can be met by You sending Us a written statement of what happened. This statement must be received within the time given for filing Proof of Loss.

Proof of Loss: Proof of loss must be provided within 90 days after the date of the loss or as soon as is reasonably possible. Failure to furnish such proof within provided period will not invalidate nor reduce any claim if it shall be shown not to have been reasonably possible to furnish such proof during that time. Proof of Loss must, however, be furnished no later than 12 months from the time it is otherwise required, except in the absence of legal capacity.

All claims require You to provide Us with the following: a Trip invoice, itinerary or confirmation showing details of Your Trip (dates of travel, destination, etc.); and any other information reasonably required to prove the loss.

Payment of Claims: Benefits for loss of life will be paid to Your designated beneficiary. If a beneficiary is not otherwise designated by You, benefits for loss of life will be paid to the first of the following surviving preference beneficiaries:

1. Your spouse;
2. Your child or children jointly;
3. Your parents jointly if both are living or the surviving parent if only one survives;
4. Your brothers and sisters jointly; or
5. Your estate.

All other benefits will be paid directly to You, unless otherwise directed. Any accrued benefits unpaid at Your death will be paid to Your estate. If You have assigned Your benefits, we will honor the assignment if a signed copy has been filed with us. We are not responsible for the validity of any assignment.

All or a portion of all benefits provided by the policy may, at Our option, be paid directly to the provider of the service(s) to You. All benefits not paid to the provider will be paid to You.

If any benefit is payable to: (a) an Insured who is a minor or otherwise not able to give a valid release; or (b) Your estate, We may pay any amount due under the policy to Your beneficiary or any relative whom We find entitled to the payment. Any payment made in good faith shall fully discharge Us to any party to the extent of such payment.

Disagreement Over Size of Loss: If there is a disagreement about the amount of the loss, either You or Us can make a written demand for an appraisal. After the demand, You and Us each select their own competent appraiser. After examining the facts, each of the two appraisers will give an opinion on the amount of the loss. If they do not agree, they will select an arbitrator. Any figure agreed to by 2 of the 3 (the appraisers and the arbitrator) will be binding. The appraiser selected by You is paid by You. We will pay the appraiser if We chooses. You will share with Us the cost for the arbitrator and the appraisal process.

Benefit to Bailee: This insurance will in no way inure directly or indirectly to the benefit of any carrier or other bailee.

Section XIII General Provisions

Excess Insurance: Insurance provided by this policy shall be in excess of all other valid and collectible insurance or indemnity or as required by state law. If at the time of the occurrence of any loss payable under this policy there is other valid and collectible insurance or indemnity in place, We shall be liable only for the excess of the amount of loss, over the amount of such other insurance or indemnity, and applicable deductible. Recovery of losses from other parties does not result in a refund of premium paid.

Beneficiary Designation and Change: Your beneficiary(ies) is (are) the person(s) designated by and on file with Us or Our administrator. You are over the age of majority and legally competent may change Your beneficiary designation at any time, unless an irrevocable designation has been made, without the consent of the designated beneficiary(ies), by providing Us or Our administrator with a written request for change. When the

request is received, whether You are then living or not, the change of beneficiary will relate back to and take effect as of the date of execution of the written request, but without prejudice to Us on account of any payment made by it prior to receipt of the request.

Clerical Error: We or Our authorized representative may make a clerical error in keeping the data. If so, when the error is found, the premium and/or benefits will be adjusted according to the correct data. An error will not end insurance validly in force, nor will it continue insurance validly ended.

Concealment and Misrepresentation: The entire coverage will be cancelled, if before, during or after a loss, any material fact or circumstance relating to this insurance has been concealed or misrepresented.

Conformity with Statute: Terms of this policy that conflict with the laws of the state where it is delivered are amended to conform to such laws.

Data Needed: We or Our authorized representative will keep a record of all the data needed to compute premium and carry out the terms of this policy. We may examine such data at any reasonable time.

Economic or Trade Sanctions: Any payments under this policy will only be made in full compliance with all United States of America economic or trade sanction laws or regulations, including, but not limited to, sanctions, laws, and regulations administered and enforced by the U.S. Treasury Department's Office of Foreign Assets Control ("OFAC"). Therefore, any expenses incurred or claims made involving travel that is in violation of such sanctions, laws and regulations will not be covered under this policy. For more information, You may consult the OFAC internet website at <https://www.treasury.gov/about/organizational-structure/offices/Pages/Office-of-Foreign-Assets-Control.aspx>.

Entire Contract: Changes: This policy and any other attachments are the entire contract of insurance. No agent or other person may change it in any way. Only an officer of the Company can approve a change. Any such change must be shown in this policy or its attachments.

Legal Actions Against Us: All policy terms will be interpreted under the laws of the state in which the policy was issued. No legal action may be brought to recover on the policy within 60 days after written Proof of Loss has been furnished. No legal action for a claim may be brought against Us after 3 years from the time written Proof of Loss is required to be furnished.

Limit on Agent's Authority: No agent may change or waive any provisions of this policy. Our office must approve any change or waiver in writing.

Misstatement of Age: If premiums are based on age and You have misstated Your age, there will be a fair adjustment of premiums based on Your true age. If the

benefits for which You are insured are based on age and You have misstated Your age, there will be an adjustment of said benefit based on Your true age. We may require satisfactory proof of age before paying any claim.

Subrogation: If We have made a payment for a loss under this coverage, and the person to or for whom payment was made has a right to recover damages from the Third Party responsible for the loss, We will be subrogated to that right. You shall help Us exercise Our rights in any reasonable way that We may request; nor do anything after the loss to prejudice Our rights; and in the event You recover damages from the Third Party responsible for the loss, You will hold the proceeds of the recovery for Us in trust and reimburse Us to the extent of Our previous payment for the loss.

Other Insurance with Us: You may be covered under only one travel policy with Us for each Trip. If You are covered under more than one such policy, You may select the coverage that is to remain in effect. In the event of death, the beneficiary or estate will make the selection. Premiums paid (less claims paid) will be refunded for the duplicate coverage that does not remain in effect.

Physician Examination and Autopsy: We, at Our expense, may have You examined when and as often as is reasonable while the claim is pending. We may have an autopsy done (at Our expense) where it is not forbidden by law.

Termination of This Policy: Termination of this policy will not affect a claim for loss, which occurs after You pay the premium and while the policy is in force.

Transfer of Coverage: Coverage under this policy cannot be transferred to anyone else.

Amendatory Endorsements

These Amendatory Endorsements are attached to and made a part of the policy issued to You. The provisions of these Amendatory Endorsements are effective on the Effective Date and will expire concurrently with the policy, unless otherwise terminated.

CALIFORNIA

The policy is hereby amended for California as follows:

1. The Who is Eligible for Coverage provision of the Coverage Provisions section is deleted in its entirety and replaced with the following:

A person who is booked to travel on a Trip and pays the required premium is covered under this policy. Coverage is only available for persons who are a citizen or resident of the United States of America.

2. The Domestic Partner definition in the General Definitions section is deleted in its entirety and replaced with the following:

Domestic Partner means two adults who have chosen to share one another's lives in an intimate and committed relationship of mutual caring. A Domestic Partnership is established in California when both persons file a Declaration of Domestic Partnership with the Secretary of State, and at the time of the filing of this document, the following requirements are met:

- (a) Neither person is married to someone else or is a member of another domestic partnership with someone else that has not been terminated, dissolved, or adjudged a nullity.
- (b) The two persons are not related by blood in a way that would prevent them from being married to each other in this state.
- (c) Both persons are at least 18 years of age, except as provided in Section 297.1 of the California Family Code.
- (d) Either of the following:
 - (i) Both persons are members of the same sex.
 - (ii) One or both persons meet the eligibility criteria under Title II of the Social Security Act as defined in Section 402(a) of Title 42 of the United States Code for old-age benefits or Title XVI of the Social Security Act as defined in Section 1381 of Title 42 of the United States Code for aged

individuals. Regardless of any other provision of this section, persons of opposite sexes may not constitute a domestic partnership unless one or both of the persons are over 62 years of age.

- (e) Both persons are capable of consenting to the domestic partnership.

3. The Injury(ies)/Injured definition in the General Definitions section is deleted and replaced with the following:

Injury(ies)/Injured means an accidental bodily injury for which the proximate cause is an Accident occurring while Your coverage under this policy is in force. The injury(ies) requires examination and treatment and must be verified by a Physician.

4. The Medically Necessary definition in the General Definitions section is deleted and replaced with the following:

Medically Necessary means that a treatment, service, or supply:

- a. required to treat an Injury or Sickness;
- b. meets generally accepted standards of medical practice where the service is rendered;
- c. is ordered by a Physician or licensed Veterinarian and performed under his or her care, supervision, or order; or
- d. is not used for the convenience of You, Physician, other providers, or any other person.

5. The Spouse definition in the General Definitions section is deleted and replaced with the following:

Spouse means Your lawful spouse, if not legally separated or divorced. For the purposes of this policy, the term spouse includes a Domestic Partner or a civil union partner whenever used.

6. The Usual and Customary definition in the General Definitions section is deleted and replaced with the following:

Usual and Customary means the comparable level of charges for similar treatment, services and supplies in the country region, and city where treatment, services or supplies are provided or performed.

7. The 1st sentence of the Optional Trip Cancellation and Optional Trip Interruption provision in the Exclusions and Limitations section is deleted and replaced the following:

We will not pay for any loss or expense caused for which the proximate cause was:

8. The 1st sentence of the Optional Medical Expense benefits provision in the Exclusions and Limitations section is deleted and replaced the following:

We will not pay for any loss or expense for which the proximate cause was from:

9. The 1st sentence of the benefit-specific, exclusion provision in the Exclusions and Limitations section is deleted and replaced the following:

We will not pay for any loss or expense for which the proximate case was from:

10. The Subrogation provision(s) in the General Provisions section are deleted in their entirety.

T7000IP-AE-CA

COLORADO

The policy is hereby amended for Colorado Residents as follows:

1. The following provisions are hereby added to the policy:

Time of Payment of Claims: Payment for any loss (other than losses for which the policy provides periodic payment) will be paid immediately upon receipt of due written proof of loss. If the policy provides for a periodic payment, it will not be paid less frequently than monthly. Any balance remaining unpaid upon the termination of liability when the policy provides periodic payment will be paid immediately upon receipt of due written proof.

2. The "Notice of Claim" provision in the "How to File a Claim" section of the policy is hereby deleted and replaced with the following:

Notice of Claim: Written notice for a claim brought under the policy must be reported to Us or Our authorized representative within 20 days after a loss occurs or as soon as is reasonably possible. You or someone on Your behalf may give the notice at Us or Our authorized representative at Our administrative office. The notice should include sufficient information to identify You.

3. The "Disagreement Over Size of Loss" provision in the

"How to File a Claim" section of the policy is hereby void and shall have no effect.

4. The "Concealment and Misrepresentation" provision in the "General Provisions" section of the policy is hereby deleted and replaced with the following:

Concealment and Misrepresentation: The entire coverage will be void, if before, during or after a loss, any material fact or circumstance relating to this insurance has been intentionally concealed or intentionally misrepresented.

5. If included, the general exclusion regarding suicide, attempted suicide or any intentionally self-inflicted injury is hereby deleted and replaced with the following:

1. suicide, attempted suicide or any intentionally self-inflicted injury of You, a Traveling Companion, Family Member or Business Partner booked and scheduled to travel with You;

T7000I-AE.CO

MICHIGAN

The policy is hereby amended for Michigan as follows:

1. The "Legal Actions Against Us" provision, located within the "General Provisions" section of the policy is hereby deleted and revised as follows:

Legal Actions Against Us: All policy terms will be interpreted under the laws of the state in which the policy was issued. No legal action may be brought to recover on the policy within 60 days after written Proof

of Loss has been furnished. No legal action for a claim may be brought against Us after 6 years from the time written Proof of Loss is required to be furnished.

2. The following provision is hereby added to the policy:

Criminal Acts: The criminal acts portion of any exclusion in the policy, or in any document attached thereto, will not be applied in a way that denies coverage/ benefits without: 1.) a court or other adjudicatory body convicting You of the criminal act that resulted in the loss; or 2.) You agreeing to a

plea deal in which You assert that You committed the criminal act that resulted in the loss.

3. When included the "Rental Property Damage Liability Benefit Exclusions," located with the Optional Rental Property Damage Liability" coverage, are hereby revised to read as follows:

Rental Property Damage Liability Benefit Exclusions:

In addition to the General Exclusions, the following exclusions apply to this benefit. Unless otherwise shown below, these exclusions apply to You or Your Traveling Companion. Benefits are not payable for any loss due to, arising or resulting from:

1. Inclement Weather or Natural Disaster;
2. intentional acts by You or Your Traveling Companion;
3. gross negligence, Willful and Wanton conduct by You or Your Traveling Companion;
4. alcohol intoxication above the statutory legal limit that Your state law allows at Your location at the time of loss;
5. any loss to motor homes; recreational vehicles; trailers; campers; boats or other watercraft; or any other vehicles or conveyances, whether motorized or not;
6. normal wear and tear of an Accommodation or its content assigned to that Accommodation that You or Your Traveling Companion occupy during Your Trip;
7. any damage that occurs as a result of a (i.) criminal, (ii.) fraudulent or (iii) intentional acts or activities of You or Your Traveling Companion that

are in violation of the written rental agreement for the rental of an Accommodation used by You during Your Trip;

8. damage to any other property or person as a result of a loss;
9. loss, theft or damage to any Baggage and Personal Effects owned by You or Your Traveling or brought on the covered Trip by You or Your Traveling Companion.
10. loss, theft or damage caused by any person other than You or Your Traveling Companion unless substantiated by a police report;
11. damage arising from pets or other animals accompanying You or Your Traveling Companion on this Trip;
12. damage or theft of boats, or damage to docks, piers, pools or other structures not part of the dwelling unit;
13. loss, theft or damage to an Accommodation if the number of persons occupying the property exceeds the rental property's occupancy limit;
14. loss of use the Rental Property;
15. any cause, if You do not report the Loss or damage to the staff of the Accommodation by the rental termination date;
16. theft without a valid police report.

T7000I-AE.MI

TEXAS

The policy is hereby amended for Texas as follows:

1. The "Concealment and Misrepresentation" provision, located within the "General Provisions" section of the policy, is hereby deleted and replaced with the following:

Concealment and Misrepresentation: The entire coverage will be void, if before, during or after a loss, any material fact or circumstance relating to this insurance has been concealed or misrepresented.

2. The "Disagreement Over Size of Loss" provision, located within the "How to File a Claim" section of the policy, is void and will have no effect.

3. The "Proof of Loss" provision, located within the "How to File a Claim" section of the policy, is hereby deleted and replaced with the following:

Proof of Loss: Proof of loss must be provided within 90 days of the date that We request proof of loss to be provided. Failure to furnish such proof within provided period will not invalidate nor reduce any claim if it shall be shown not to have been reasonably possible to furnish such proof during that time. Proof of Loss must, however, be furnished no later than 12 months from the time it is otherwise required, except in the absence of legal capacity.

All claims require You to provide Us with the following: a Trip invoice, itinerary or confirmation showing details of Your Trip (dates of travel, destination, etc.); and any

other information reasonably required to prove the loss.

4. The following provision is hereby added to the policy:

Time of Payment of Claims: We shall notify You in writing of the acceptance or rejection of a claim not later than the 15th business day after We receive all items, statements, and forms required by Us to secure final proof of loss.

If We are unable to accept or reject the claim within the period specified above, We shall, within that same period, notify You of the reasons that We need additional time. We shall accept or reject the claim not

later than the 45th day after the date We notify You of Our need for additional time.

If We notify You that We will pay a claim or part of a claim, We shall pay the claim not later than the 5th business day after the date notice is made.

If payment of the claim or part of the claim is conditioned on the performance of an act by You, We shall pay the claim not later than the 5th business day after the date the act is performed.

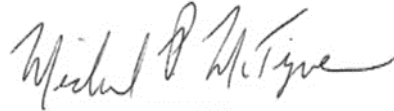
T7000I-AE.TX

If there is a conflict between the policy and these Endorsements, the terms of these Endorsements will govern.

Signed for United States Fire Insurance Company By:



Marc J. Adee
Chairman and CEO



Michael P. McTigue
Secretary

Have a complaint or need help?

If you have a problem with a claim or your premium, call your insurance company or HMO first. If you can't work out the issue, the Texas Department of Insurance may be able to help.

Even if you file a complaint with the Texas Department of Insurance, you should also file a complaint or appeal through your insurance company or HMO. If you don't, you may lose your right to appeal.

United States Fire Insurance Company

To get information or file a complaint with your insurance company or HMO:

Call: Complaint Department at 732-676-9800

Toll-free 1-800-392-1970

Email: AHComplaintHandling@cfins.com

Mail: United States Fire Insurance Company
Complaint Department
c/o Crum & Forster
5 Christopher Way
Eatontown, NJ 07724

The Texas Department of Insurance

To get help with an insurance question or file a complaint with the state:

Call with a question: 1-800-252-3439

File a complaint: www.tdi.texas.gov

Email: ConsumerProtection@tdi.texas.gov

Mail: MC 111-1A, P.O. Box 149091, Austin, TX 78714-9091

¿Tiene una queja o necesita ayuda?

Si tiene un problema con una reclamación o con su prima de seguro, llame primero a su compañía de seguros o HMO. Si no puede resolver el problema, es posible que el Departamento de Seguros de Texas (Texas Department of Insurance, por su nombre en inglés) pueda ayudar.

Aun si usted presenta una queja ante el Departamento de Seguros de Texas, también debe presentar una queja a través del proceso de quejas o de apelaciones de su compañía de seguros o HMO. Si no lo hace, podría perder su derecho para apelar.

United States Fire Insurance Company

Para obtener información o para presentar una queja ante su compañía de seguros o HMO:

Llame a Complaint Department al 732-676-9800

Teléfono gratuito: 1-800-392-1970

Correo electrónico: AHComplaintHandling@cfins.com

Dirección postal: United States Fire Insurance Company
Complaint Department
c/o Crum & Forster
5 Christopher Way
Eatontown, NJ 07724

El Departamento de Seguros de Texas

Para obtener ayuda con una pregunta relacionada con los seguros o para presentar una queja ante el estado:

Llame con sus preguntas al: 1-800-252-3439

Presente una queja en: www.tdi.texas.gov

Correo electrónico: ConsumerProtection@tdi.texas.gov

Dirección postal: MC 111-1A, P.O. Box 149091, Austin, TX 78714-9091

Privacy Notice

United States Fire Insurance Company, The North River Insurance Company and affiliates within Crum & Forster (collectively, "The Company") values your business and your trust. In order to administer insurance policies and provide you with effective customer service, we must collect certain information including nonpublic personal information about our customers and claimants. Nonpublic personal information means information that allows someone to identify or contact you ("Information"). We are committed to protecting such Information and we will comply with all applicable federal and state laws and regulations. This notice describes how we collect, use and share your Information, your rights with respect to insurance products issued by The Company and our legal duties and privacy practices. State laws require that we provide this notice. Please review this Notice and keep a copy of it with your records.

Your privacy is our concern

When you apply to The Company for insurance or make a claim against a policy written by The Company, you disclose information about yourself to us. The Company limits the collection, use, and disclosure of such information to only what is needed to properly produce, underwrite and service its insurance products and/or fulfill legal or regulatory requirements. The Company maintains administrative, technical and physical safeguards that comply with state and federal regulations to protect your Information. We also limit employee access to Information to those with a business reason for knowing such Information and we take measures to enforce employee privacy responsibilities.

What kind of information do we collect about you and from whom?

We obtain most of our Information from you. The application or claim form you complete, as well as any additional information you provide, generally gives us most of the information we need to know. Sometimes we may contact you by phone or mail to obtain additional information. We may use information about you from other transactions with us, our affiliates, or others. Depending on the nature of your insurance transaction, we may need additional information about you or other individuals proposed for coverage. We may obtain the additional information we need from third parties, such as other insurance companies or agents, government agencies, medical providers, insurance support organizations, the state motor vehicle department, information clearinghouses, credit reporting agencies, courts, or public records. A report from a consumer reporting agency may contain information as to creditworthiness, credit standing,

credit capacity, character, general reputation, hobbies, occupation, personal characteristics, or mode of living.

What do we do with the information collected about you?

The Company collects nonpublic information to conduct its business of producing, underwriting, servicing and administering its insurance products. If coverage is declined or the charge for coverage is increased because of information contained in a consumer report we obtained, we will inform you, as required by state law or the federal Fair Credit Reporting Act. We will also give you the name and address of the consumer reporting agency making the report. We may retain information about our former customers and may disclose that information to affiliates and non-affiliates only as described in this notice.

To whom do we disclose information about you?

Access to non-public personal information is limited to those employees, and authorized representatives, attorneys and service providers who specifically need such information to conduct their business responsibilities. In addition, we may disclose all the information that we collect about you to affiliated companies and nonaffiliated third parties (as permitted by law), such as:

- Insurance companies;
- Insurance agencies;
- Loss adjusters;
- Medical providers;
- Third party non-insurance service providers;
- Third party administrators;
- Medical bill review companies;
- Reinsurance companies; and
- Similar service providers.

Crum & Forster requires its service providers to abide by privacy laws in handling non-public personal information obtained through its business relationship with Crum & Forster. Additionally, Crum & Forster may disclose non-public personal information to third parties as allowed or required by law. For example, Crum & Forster may release your Information to comply with reporting requirements, to comply with a subpoena, warrant, legal process or other order or inquiry of a court, governmental agency or state or federal regulator, or to fulfill C&F's obligations to its insurers and reinsurers. We may also share your personal information in order to establish or exercise our rights, to defend against a legal claim, to investigate, prevent, or take action regarding possible illegal activities, suspected fraud, safety of person or property, or a violation of our policies.

If you conclude your relationship with the Company, the Company will continue to safeguard your privacy in accordance with the standards described in this notice. The Company maintains physical, electronic and procedural safeguards to protect non-public personal information.

About Our Websites

We may collect information via technology about how you use our website, including the elements you have interacted with, metadata, and other details about these elements, clicks, change states, and other user actions. This information is used primarily to provide, maintain, protect, and improve our current products and to develop new ones.

We may use cookies on certain pages of our site. Cookies are stored on your computer, not on our site. Most cookies are "session cookies" which means that they are automatically deleted at the end of each session. A cookie itself does not have the ability to automatically collect personal information about you. A cookie can store certain information that identifies your computer to us so that you do not need to re-enter that information as frequently

when you use our site. The cookie does not contain your password.

We reserve the right to change our policy regarding cookies and the collection of information from visitors at any time without advance notice. Should any new policy be put into effect, we will post it on this website, and the new policy will apply only to information collected thereafter. You may opt out of receiving cookies or delete any prior cookies by changing your specific internet browser settings. The privacy of communication over the internet cannot be guaranteed. If you are concerned about the security of your communication, we encourage you to send your correspondence through the postal service or use the telephone to speak directly to us. We do not represent or warrant that the site, in whole or in part, is appropriate or available for use in any particular jurisdiction. Those who choose to access the site, do so on their own initiative and at their own risk, and are responsible for complying with all local laws, rules and regulations. We do not assume any responsibility for any loss or damage you may experience or incur by the sending of personal information over the internet by or to us. This Usage Agreement shall be governed by the laws of the United States and of the State of New Jersey, without giving effect to its conflict of laws provisions.

Please know that The Company has not and will not sell any consumers' personal information. We do not sell your nonpublic personal information to any third parties nor do we use it for marketing purposes.

How to contact us

If you have any questions about this Privacy Notice or about how we use the information we collect, please contact us at:

Crum & Forster Legal Department
305 Madison Avenue
Morristown, NJ 07960
privacyinformation@cfins.com

Changes to this Privacy Notice

We may revise this notice at any time. If we make material changes, we will notify you as required by law.

For California Residents Only:

If you are a California resident, you may be entitled to additional rights over your Information. We do not, and will not, sell Information collected from you. The California Consumer Privacy Act (CCPA) provides California residents, upon a verifiable consumer request, certain rights that include:

The right to request that we disclose (1) The categories of personal information that we have collected about you; and (2) The categories of personal information that we have disclosed about you for a business purpose

The right to request that we delete the personal information it has collected from you, subject to certain legal exceptions, for example, when such personal information is necessary to fulfill or comply with our legal obligations.

The right to be protected from discrimination for exercising your CCPA rights. If you choose to exercise your privacy rights, we will not charge you different prices or provide different quality of services unless those differences are related to your information.

You may designate an authorized agent to act on your behalf and make a request of us under the CCPA.

To exercise your rights under the CCPA or to seek assistance, please do one of the following:

If you would like to make a Request to Know, go to <http://www.cfins.com/request-to-know-california-residents/> or call 1.844.254.5754

If you would like to make a Request to Delete, <http://www.cfins.com/request-to-delete-california-residents/> or call 1.844.254.5754

Fill out and send back to us the Request to Know / Request to Delete form to:

Crum & Forster Legal Department
PO Box 1973
305 Madison Avenue
Morristown, NJ 07962

privacyinformation@cfins.com

We will attempt, where practical, to respond to your requests and to provide you with additional privacy-related information. We will confirm receipt of verifiable consumer requests within ten (10) days of receipt. You may only make a verifiable consumer request for personal information twice within a twelve (12) month period. We cannot respond to your request if we cannot verify your identity or authority to make the request and confirm the personal information relates to you. Any consumer with a disability may access this notice by contacting us at the address, email or toll free number listed above.

We may change this California Privacy Notice and our privacy practices over time. Our most current Privacy Policy and California Privacy Notice can be found on our website at <http://www.cfins.com/terms/>.

January 2020